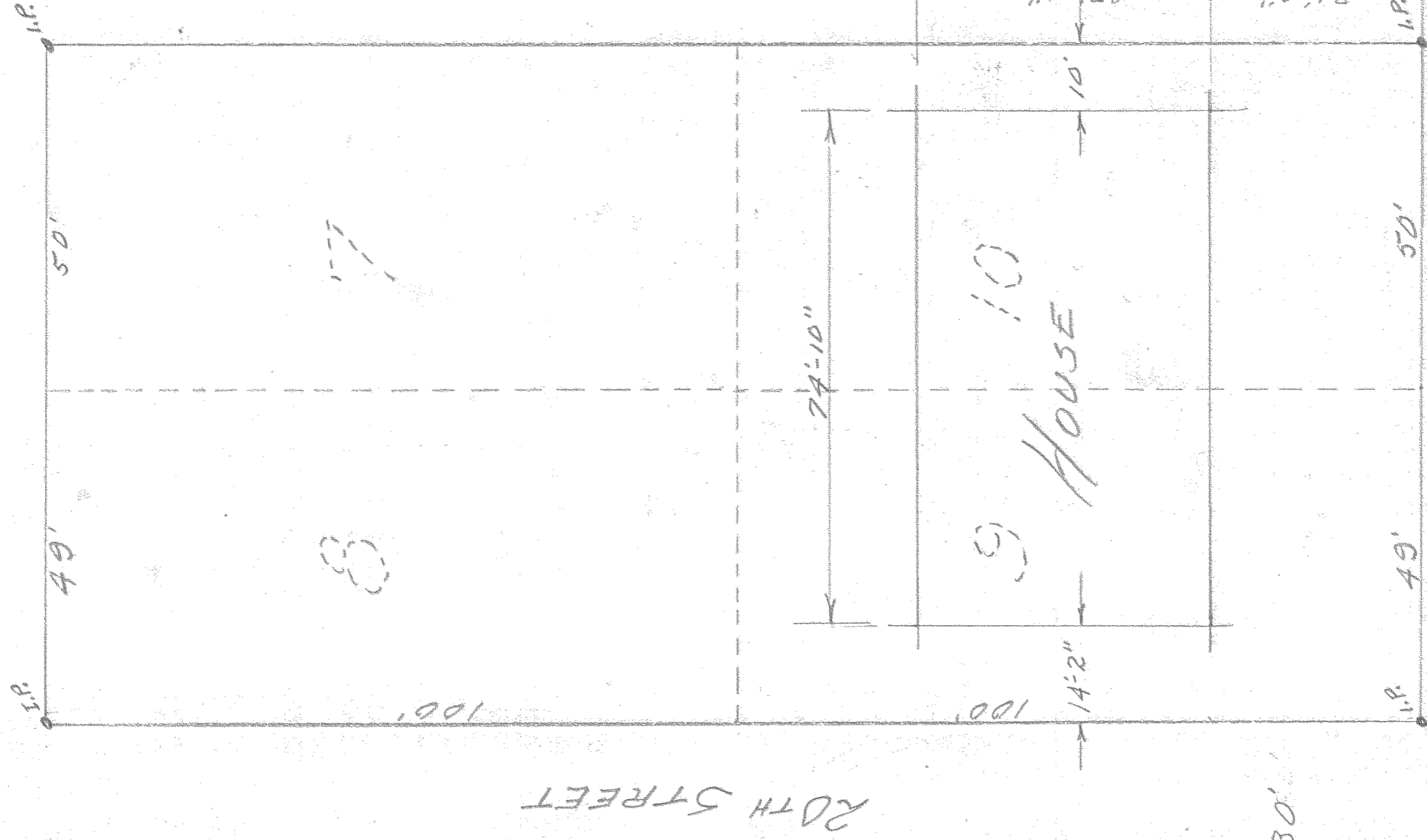
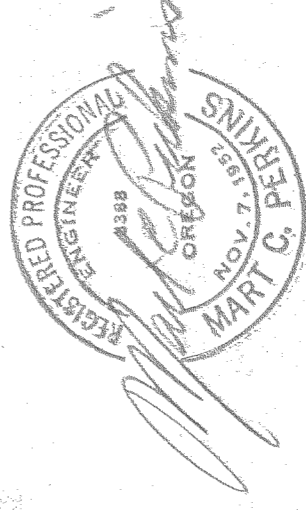


West line lot 25 Adams Paradise Acreage

60' ARMADALE AVE.



PLAT SURVEY  
 LOTS 7, 8, 9 & 10  
 OAKCREST ADDITION TO THE  
 CITY OF HOOD RIVER, ORE.  
 Scale - 1" = 20' Date - Dec. 4, 1956



20TH STREET & WEST SHERMAN AVE.

533.6' to 1/4 Cor. between SECS 26 & 35 T-3-N, R-10-E, M.M.

3 COPIES A1K4 554 26 3N 10E

#2-047

0707