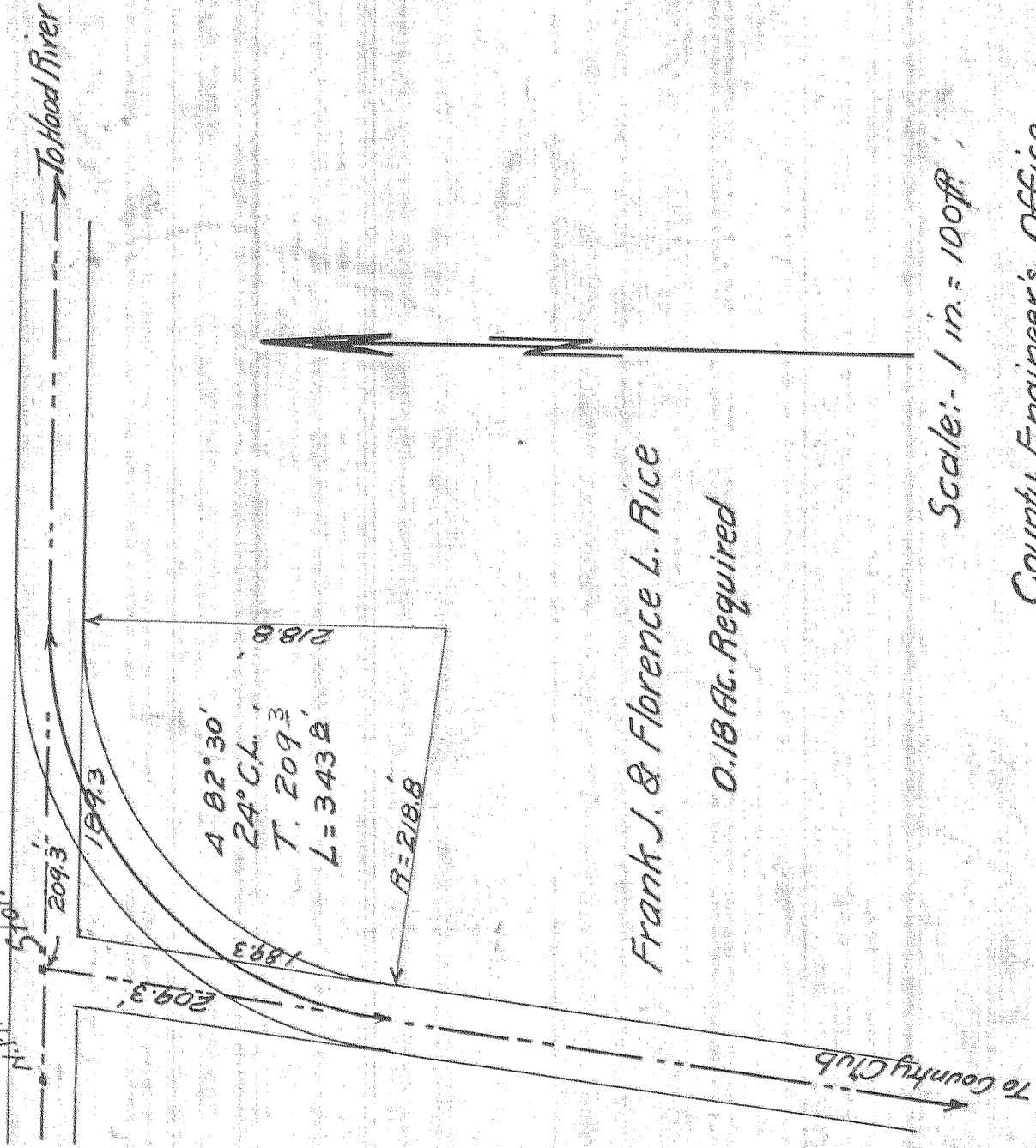


4-7-10
Sec A-7-10
S 1/4 NE 1/4 Sec of Tract

N.M. Cor. S 1/2

N.M. Cor. S 1/4

N.M. Cor. S 1/2



Frank J. & Florence L. Rice

0.18 Ac. Required

Scale: 1 in. = 100 ft.

County Engineer's Office

#4-052 - 3

0676