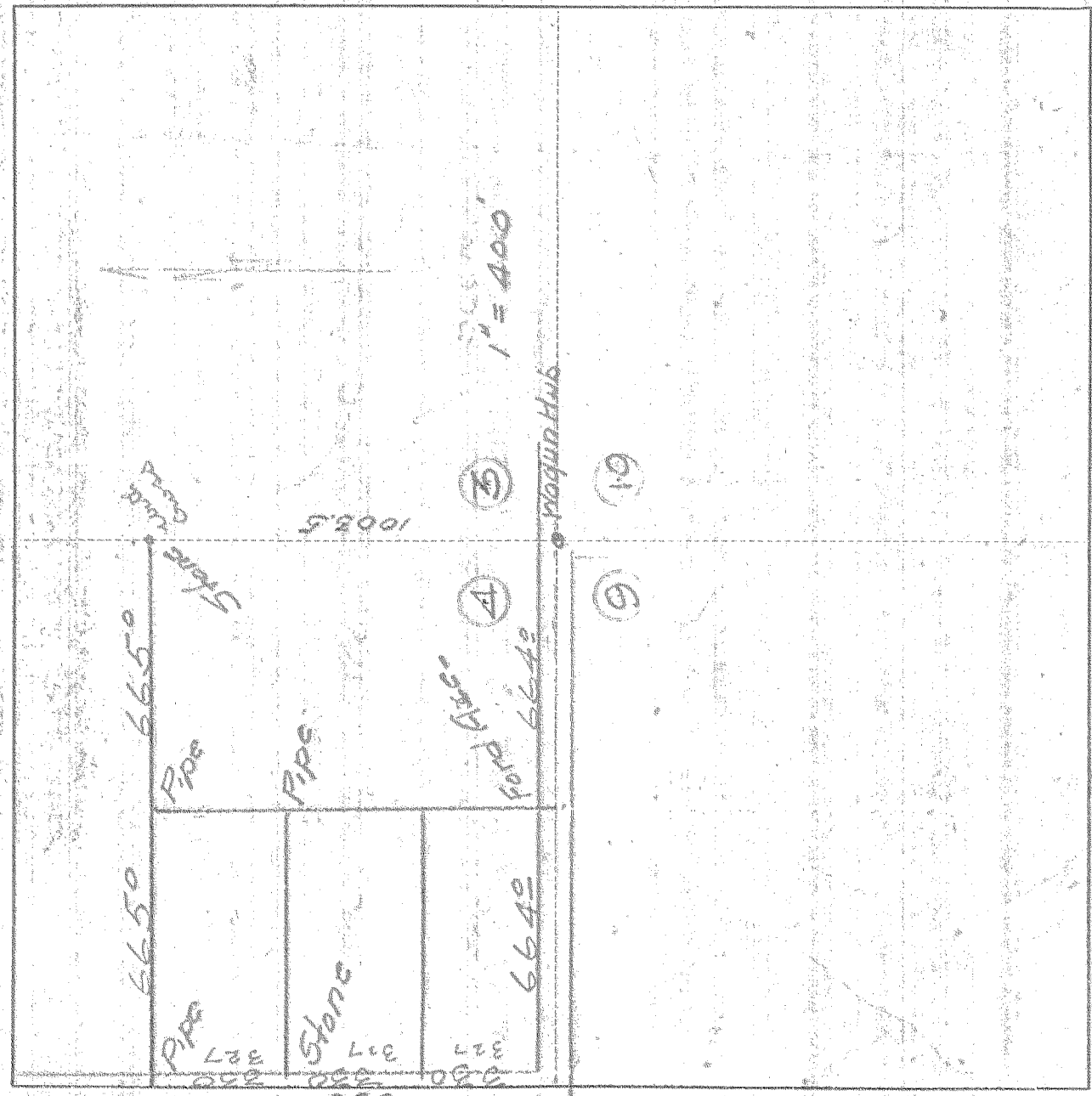


SURVEY IN 54th SEC. 4 TWP. 2 N RANGE 10 EAST W. M.

FOR FEED DATE 4/25/32



I do hereby certify that this sketch was made from notes taken during an actual survey made by me on April 24 1932, and that it correctly represents field work of said survey.

W. H. HARRIS  
County Surveyor  
Hood River County, Oregon

Helpers W. H. HARRIS #4-047 0674 H