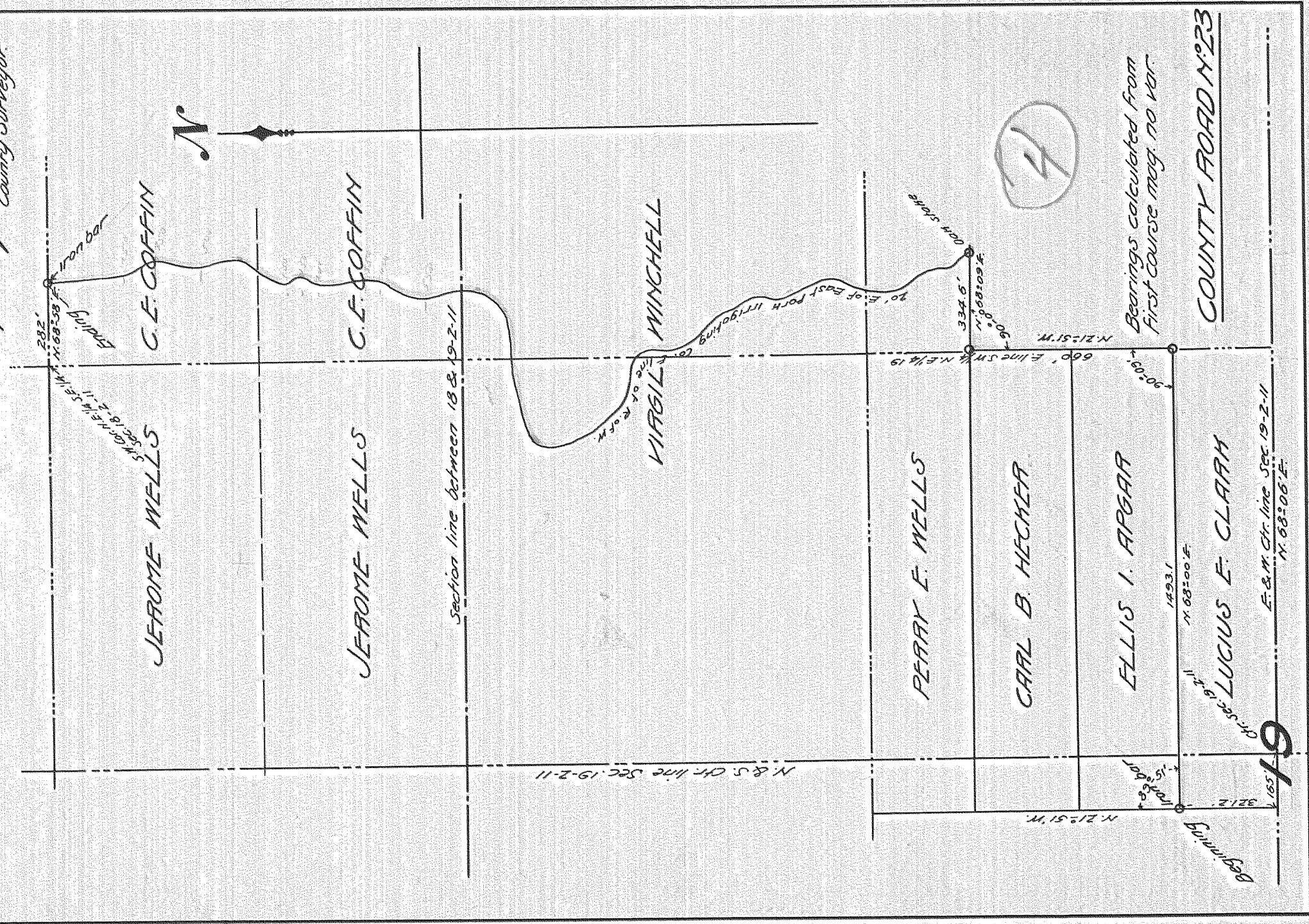


No 23  
ROAD PLAT  
E. I. ARGGAR ET AL

Scale 1" = 400' - Jan. 18, 1911

Murray Kay County Surveyor



Bearings calculated from  
 First Course Mag. No. 108

COUNTY ROAD NO. 23

E. & M. Cr. line Sec. 19-2-11  
 N. 68° 06' E.

9

100057 2008521 44-494