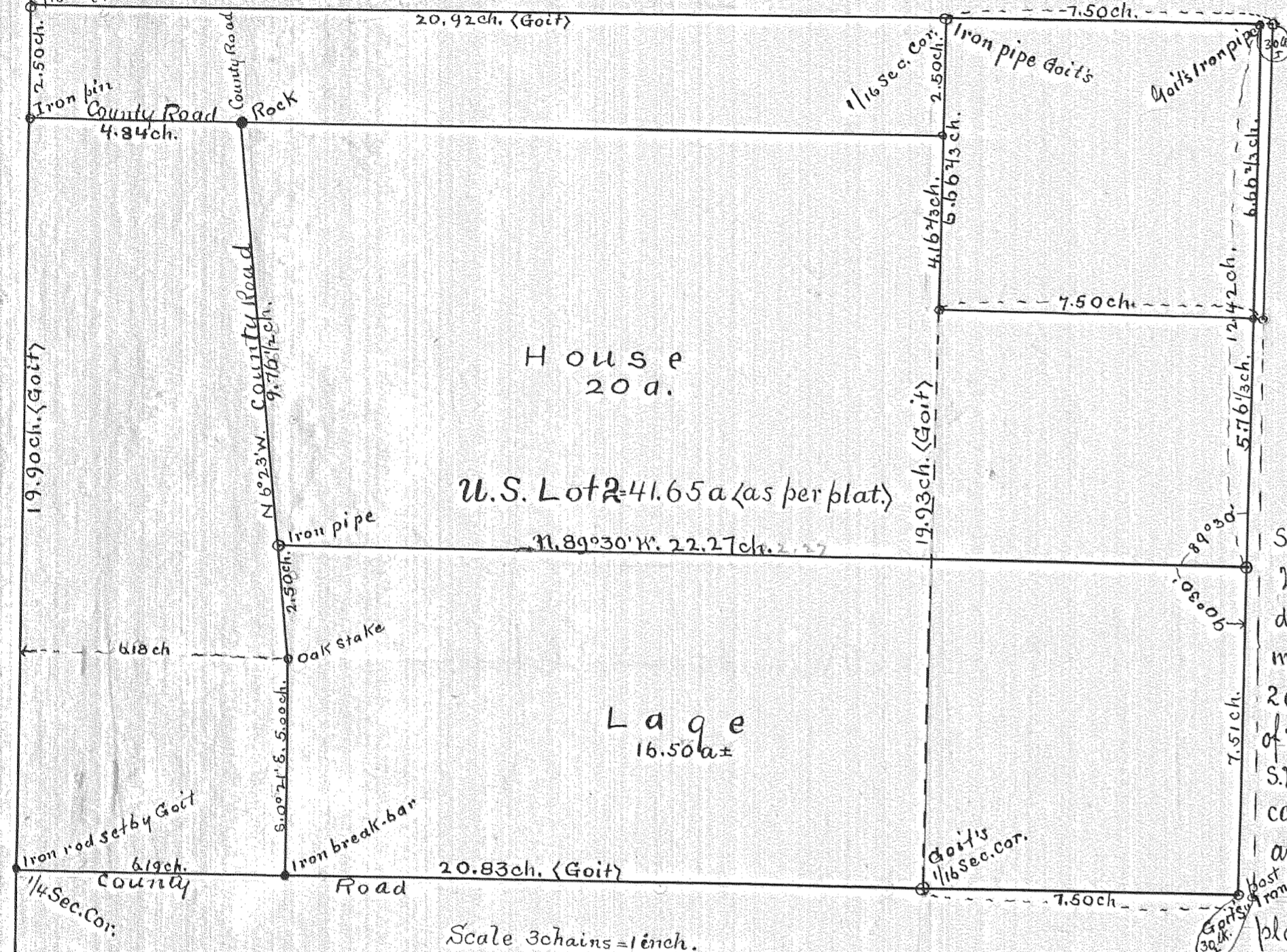


PLAT

Survey of certain lines of lands of Dr. House & Henry Lage in So. 1/2 T6. W. 1/4 Sec. 19 Sp. 29 T6. R9. 1 E. W. 216

A.S. 1908 by
J. L. Henderson
Surr.



State of Oregon }
Wasco County } S.S. J. John Heland Henderson, Surveyor, do hereby certify that on the 27th
day of March, 1908, I made a survey of certain lines as shown by the annexed copy of
my field notes, and as designated on this plat: to wit, the South boundary of Dr. House's
20 acres, and the East and West boundaries thereof; also the East and West boundaries
of Henry Lage's 16 1/2 acre tract, also the distance from 1/4 Sec. cor. to Secs. 19 and 24 to said Lage's
S.W. corner. Part of these lines are re-surveys of my former work. I accepted certain
corners and distances as heretofore established by Goit, then County Surveyor, as correct,
and did not check same. I have shown Goit's corners and distances on this plat and
have written his name therewith. All other corners and distances on this
plat were set and measured by me either in this or a previous survey. I think there
is a mistake in Goit's survey. His notes show (I have a copy of his notes made
by himself) that the North boundary of U.S. lot 2 is 20.92 chs. and the South
boundary is 20.83 chs. These distances place the East boundary of the House and Lage
tracts about 30 links East of Goit's established East boundary of same. This throws the Sub-
division of the Section 19 by Goit in doubt, and should be re-surveyed to find error,
that in making this survey I used a Gunley transit and steel tape, both in adjustment,
and that I marked all corners set by me as shown on this plat; and that the courses, angles and
distances of my survey as marked on this plat, to the best of my belief are correct.

Dated Hood River, Oregon, May 1, 1908

John Heland Henderson,
Surveyor.

