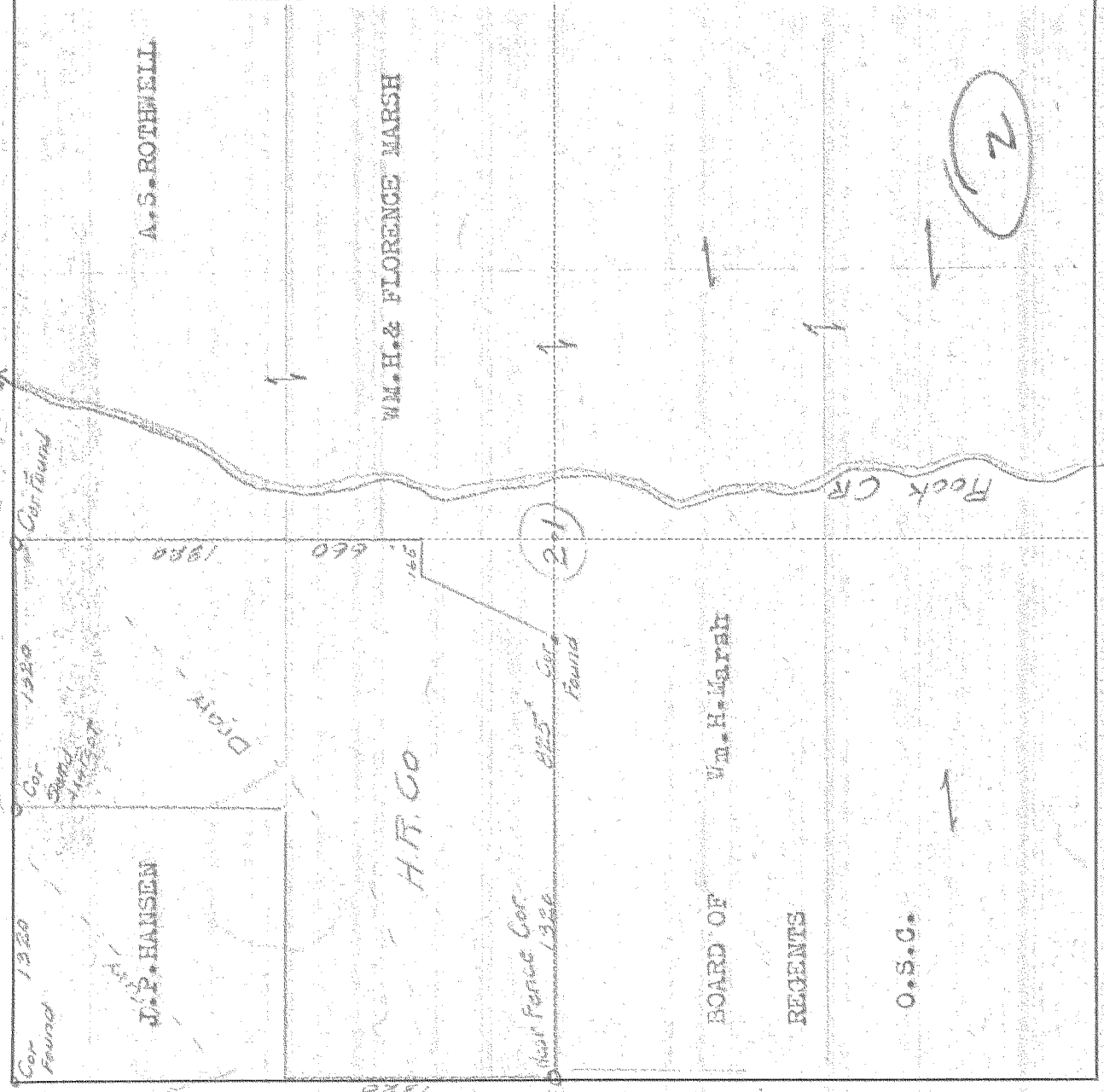


SURVEY IN NW 1/4 SECT 21, TWP 2 North RANGE 11 EAST W. M.

FOR Hood River Co. DATE June 28, 1940



Scale 1 inch = 800'

I do hereby certify that this sketch was made from notes taken during an actual survey by me on June 27 1940, and that it correctly represents the field work of said survey.

C.M. Hurlburt
County Surveyor
Hood River County, Oregon

Helpers Vern Lill, Lena Look