

PLAT OF 2 ACRES IN THE S.W. COR. OF THE N.W. 1/4 AND OF THE S.E. 1/4 OF THE S.W. 1/4 AND THE S.W. 1/4 OF THE

S.E. 1/4 OF SEC. 7 T. 2 N. R. 11 E. W.M. AFTER A SURVEY MADE AUG. 12 AND 13, 1909 FOR WILLIS VAN HORN

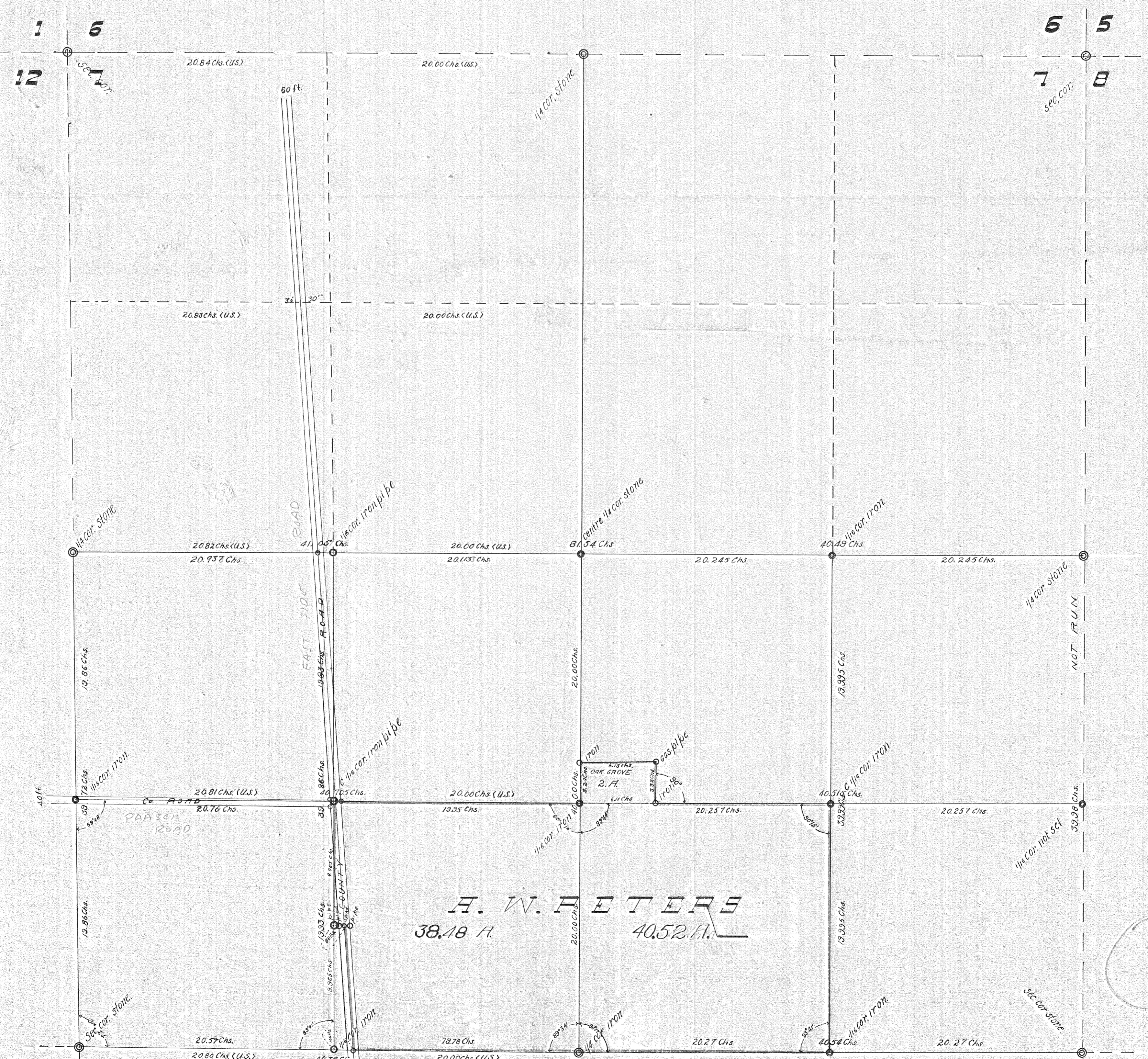
John Seland Henderson, County Surveyor.
By Sidney E. Henderson, Deputy.

State of Oregon }
County of Hood River } S.S.

I, Sidney E. Henderson, Deputy County Surveyor for Hood River County, Oregon, do hereby certify that on the 12th and 13th days of August 1909, I surveyed for Willis Van Horn the S.E. 1/4 of the S.W. 1/4 and the S.W. 1/4 of the S.E. 1/4 of Sec. 7, T. 2 N. R. 11 E. W.M. and in same day I surveyed a tract containing 2.01 acres out of the S.W. corner of the S.W. 1/4 of the S.E. 1/4 as follows:— I re-checked on the centre of Sec. 7 and set all the 1/16 corners in South 1/2 of Sec. 7, also the centre 1/16 corner, I further certify that I have surveyed said land as per copy of field notes hereto attached and that I marked all corners with iron or stone witnessing same with iron or stone, that all courses and distances shown on this plat are correct to the best of my knowledge and belief, that in making said survey I used a Steel Tape and Survey Transit both in adjacentment.

John Seland Henderson County Surveyor
By Sidney E. Henderson Deputy County Surveyor.

N



0631

9