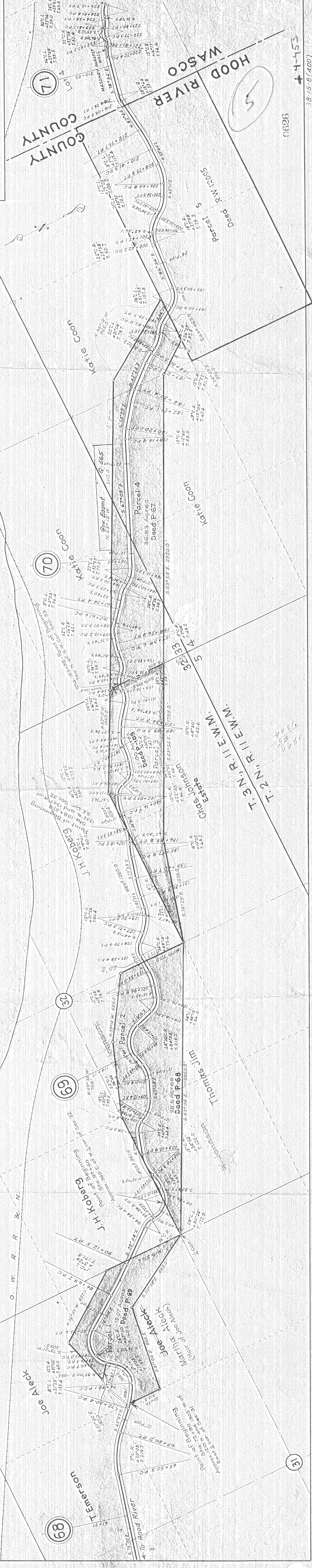


DRG. No. 6C-15-7
 "Official Part"
 OREGON STATE HIGHWAY DEPARTMENT
 Map showing Property Acquired for
HOOD RIVER-MOSIER FOREST WAYSIDE
HOOD RIVER-MOSIER SECTION
 COLUMBIA RIVER HIGHWAY
 HOOD RIVER COUNTY
 Scale 1 in. = 400 ft. Dec. 1927



165
 165 70
 495
 599.8
 194.8

1344
 1285
 1285

0626

44-453

38-15-8(400)