

U. S. ARMY ENGINEER DISTRICT, PORTLAND  
CORPS OF ENGINEERS  
628 PITTOCK BLOCK  
PORTLAND 5, OREGON

NPPRE-PC

12 September 1963

Mr. George Frey  
County Engineer  
Hood River, Oregon

Dear Sir:

In reply to your letter dated September 5, 1963, our records show that the 2-inch iron pipe with brass cap to which you refer was set on September 12, 1935 to mark the quarter section corner common to Sections 3 and 4, Township 2 North, Range 11 East, W.M. It was set from the remains of a bearing tree which was a 16-inch oak snag with scribe marks bearing S. 50° E. 54.8 feet. A new bearing tree was marked which was a 5-inch oak bearing east 5.3 feet.

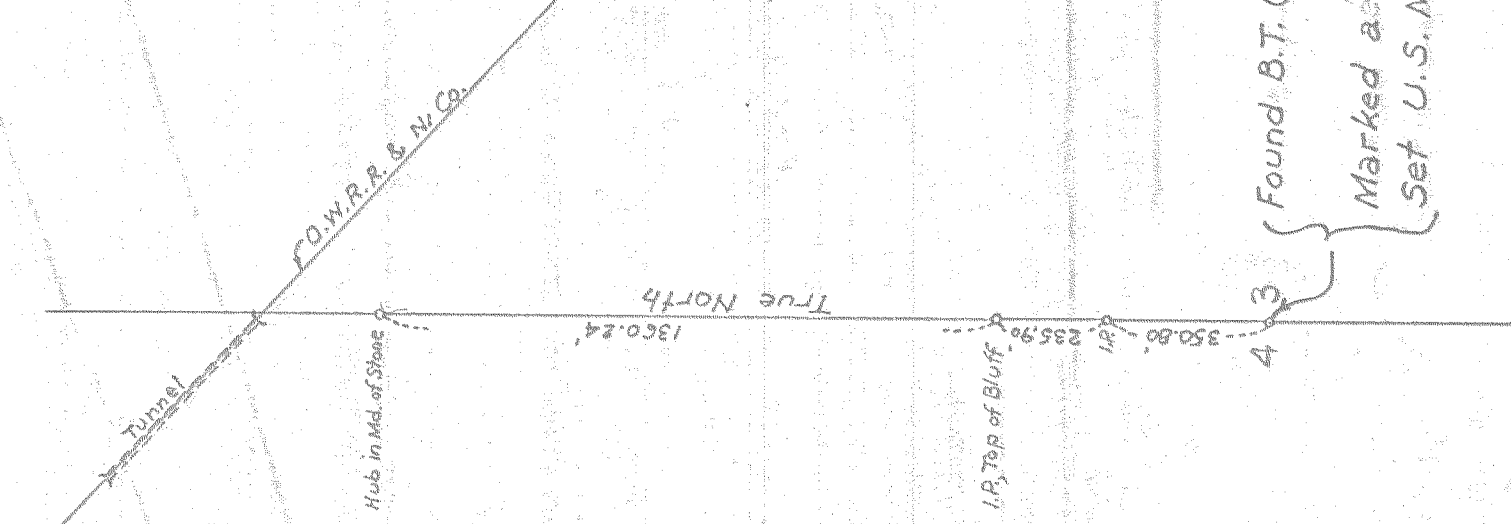
A sketch is inclosed which also shows the position of three points set on the section line north of the quarter section corner.

Sincerely yours,



W. J. ASHWORTH  
Assistant Chief, Real Estate Division

1 Incl  
Sketch



Retracement Notes of 1/4 Sec. Cor. common to Sec's. 3  
and 4, T. 2 N., R. 11 E., W. M.

0620

#4-471

Inch. 1