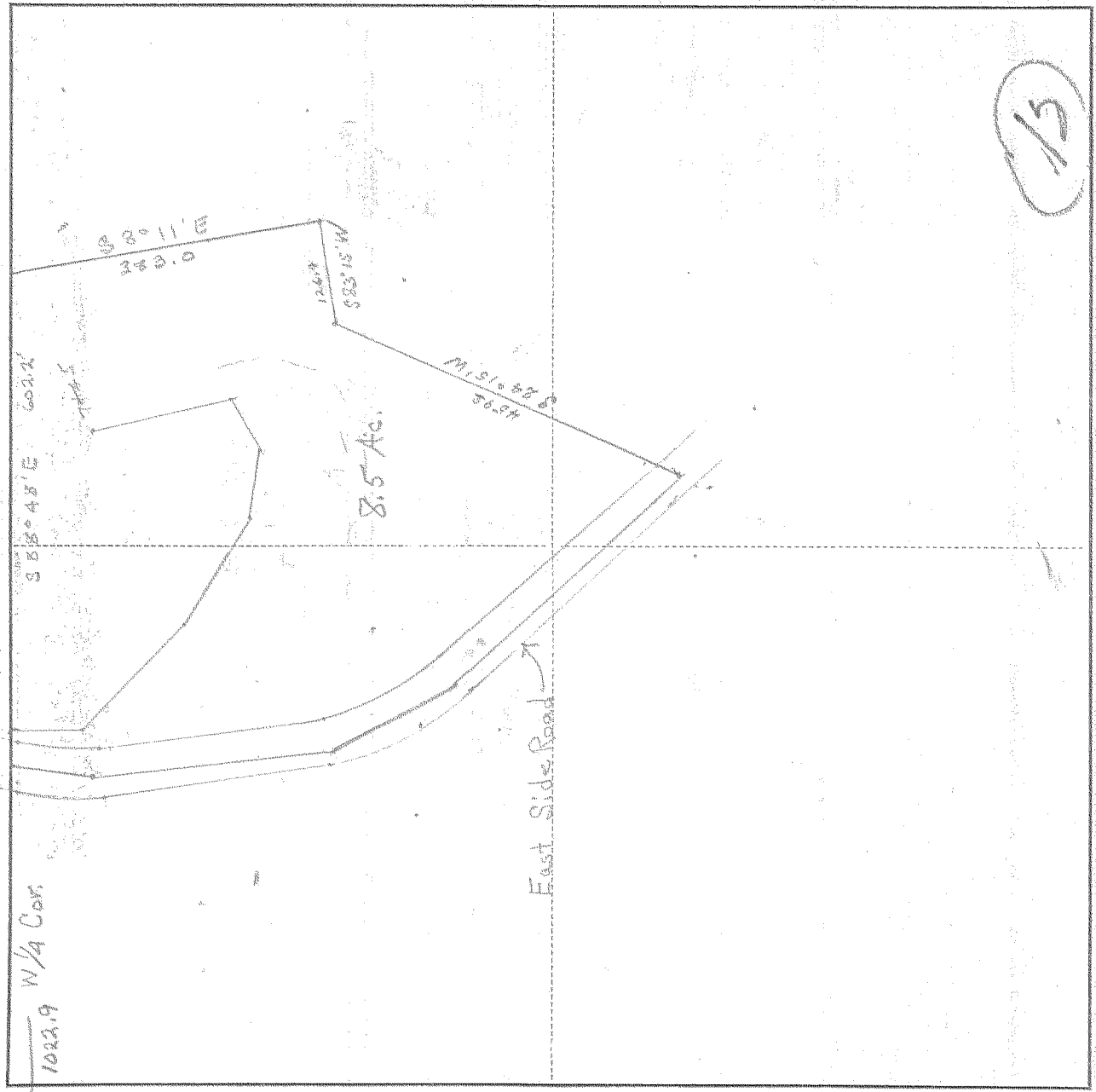


SURVEY IN SW 1/4, SECT. 6, TWP. 2 N, RANGE 1 E, EAST W. M.

FOR Joe Young DATE July 18, 1946



Scale 1 inch = 200 Ft.

I do hereby certify that this sketch was made from notes taken during an actual survey by me on July 18, 1946, and that it correctly represents the field work of said survey.

D. D. Button
Deputy County Surveyor
Hood River County, Oregon

Helpers Rod Bunnell