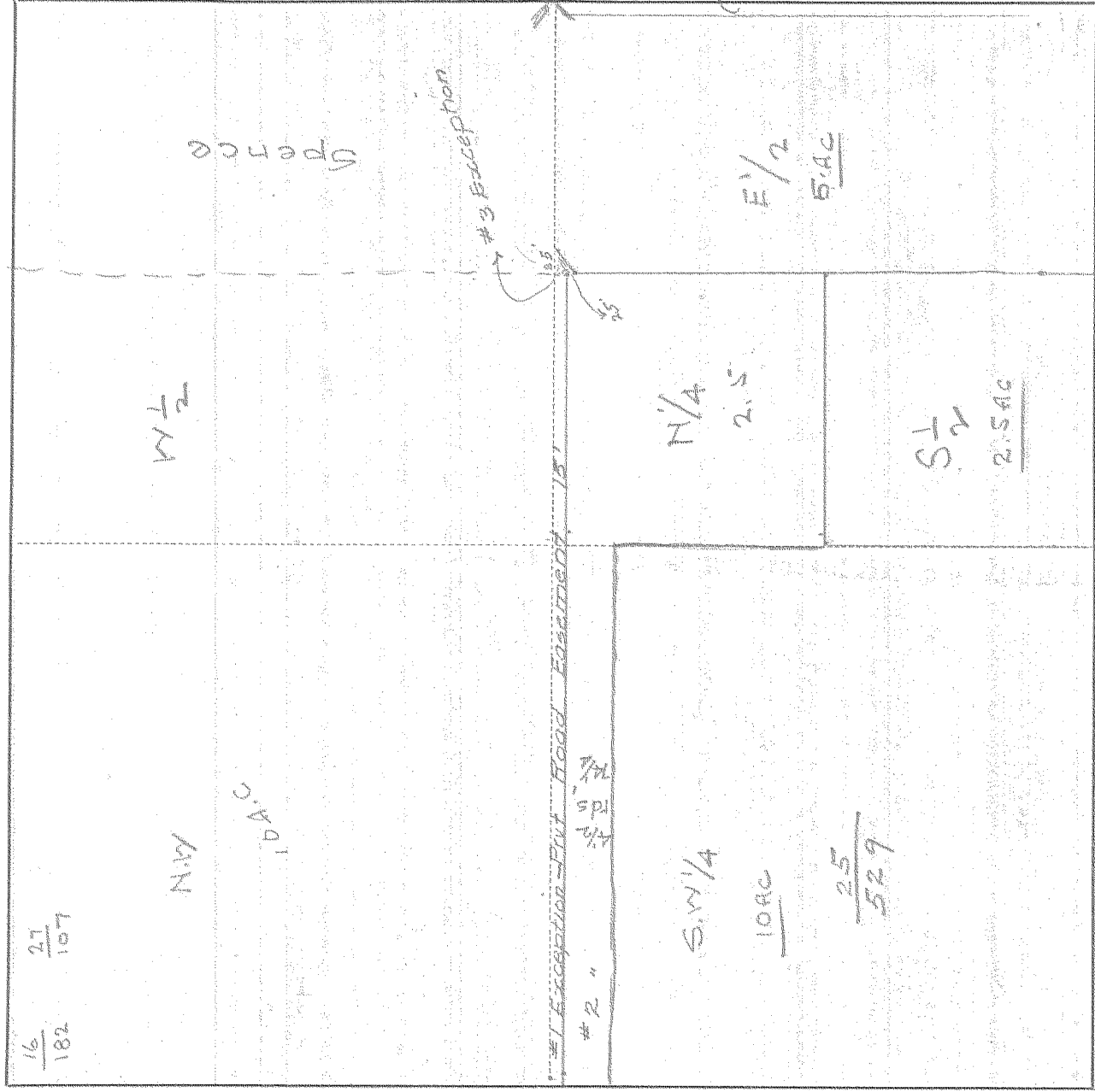


SURVEY IN SE 1/4 of NE 1/4, SECT 36, TWP. 2 N, RANGE 10, EAST W. M.

FOR Hoizer

DATE \_\_\_\_\_



Scale 1 inch = 200

I do hereby certify that this sketch was made from notes taken during an actual survey by me on \_\_\_\_\_ 19\_\_\_\_\_, and that it correctly represents the field work of said survey.

County Surveyor  
Hood River County, Oregon

Helpers \_\_\_\_\_

0598

#4-4416