

42

ROAD PLAT

C.A. SCHEITHY ET AL

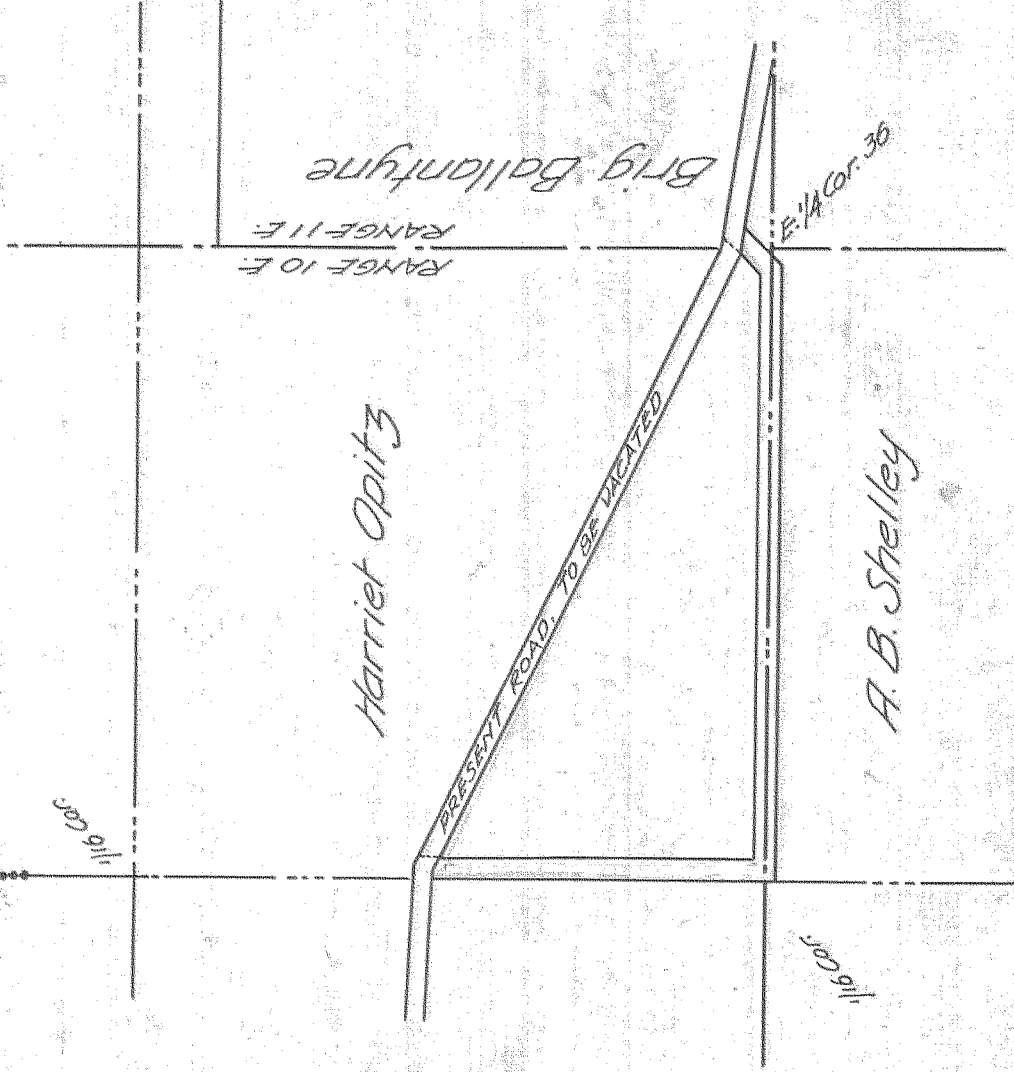
In Sec. 36, T. N. - 10 E. and Sec. 6, T. N. - 11 E. N. M.

Length $\frac{3}{8}$ miles - Width 40 Ft.

Scale 1" = 400' - Hood River, Or. July 22, 1912

Murray Kay County Engr.

N



10

0597

54-25-15000-45