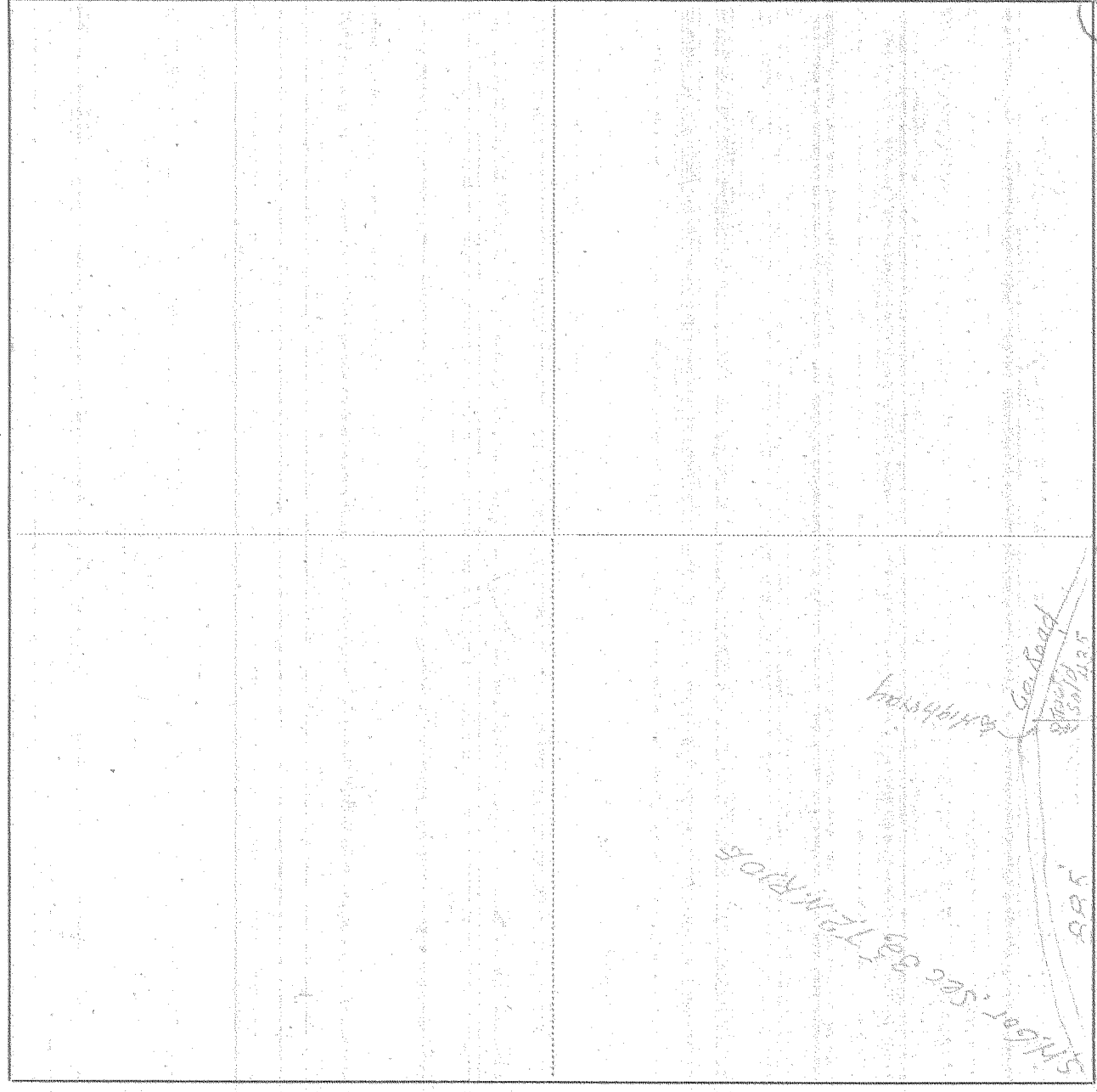


SURVEY IN S.W. 1/4 SECT 35, TWP 2 N, RANGE 10, EAST W. M.

FOR John Howsall DATE Nov. 8, 1949



Scale 1 inch =

6

I do hereby certify that this sketch was made from notes taken during an actual survey by me on Nov. 8 1949, and that it correctly represents the field work of said survey.

John Howsall
County Surveyor
Hood River County, Oregon

Helpers John Howsall

0596

4-429