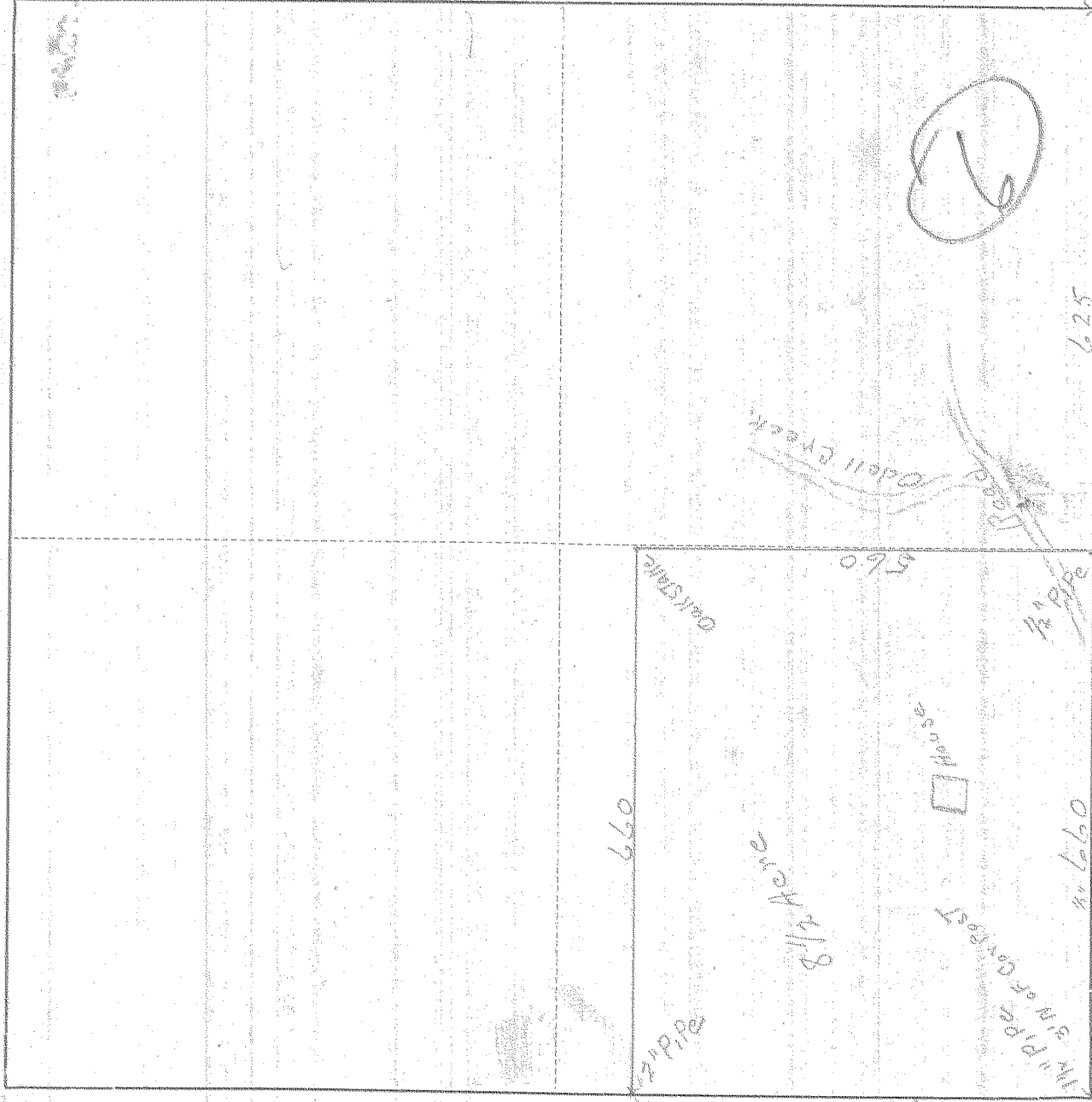


SURVEY IN SE 1/4 - NW 1/4, SECT 34, TWP 2, RANGE 10, EAST W. M.

FOR Lenard

DATE 7/9/40



Scale 1 inch = 40'

I do hereby certify that this sketch was made from notes taken during an actual survey by me on \_\_\_\_\_ 19\_\_\_\_\_, and that it correctly represents field work of said survey.

County Surveyor  
Hood River County, Oregon

Helpers Bill & Look

0579 #4-117