

ROAD PLAT SHAKER MILLER ET AL

In sections 34 & 35, Twp. 2 N - R. 10 E. W.M.

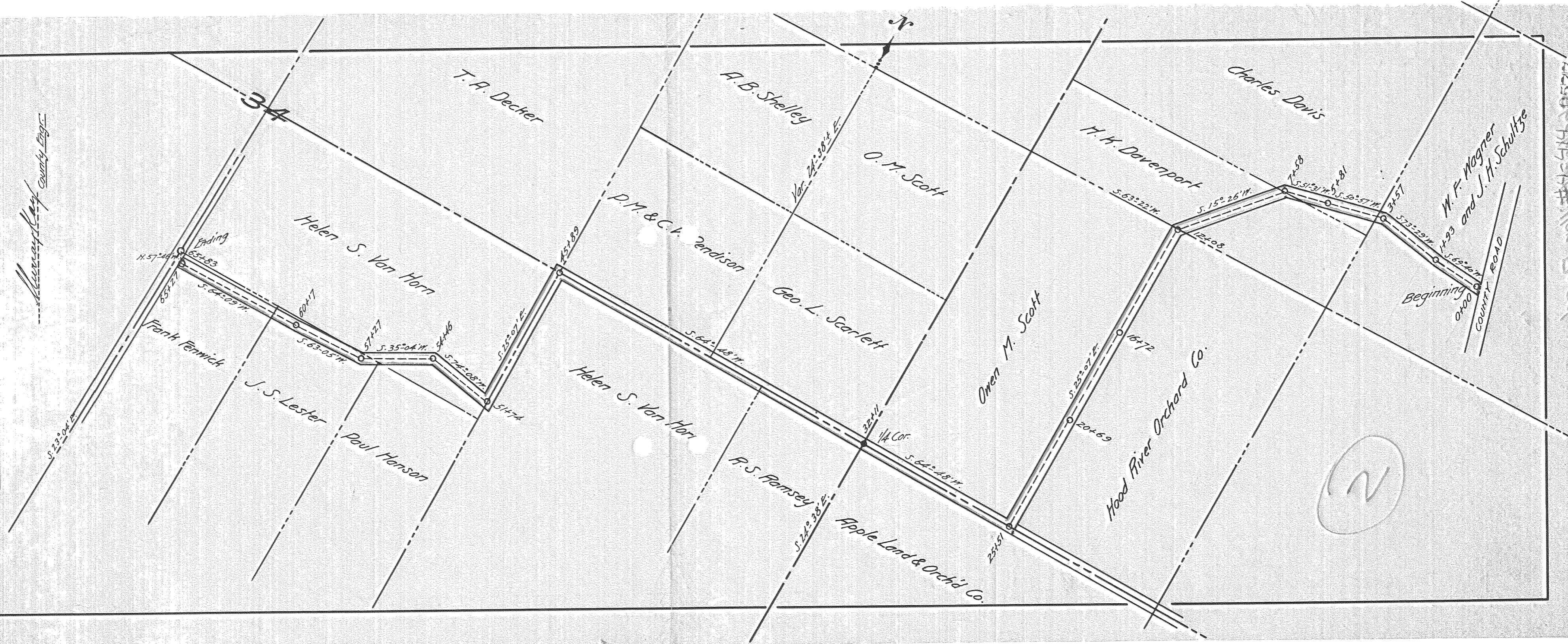
Stadia measurements. Calculated bearings.

Length 1/4 miles - Width 40 ft.

Maximum grade 15 per cent

Scale 1" = 300' - Hood River, Or. Sept. 18, 1915

Murray Kay
County Engr.



12500 N.W. 1/4 Sec. 34, T. 2 N., R. 10 E., S. 47