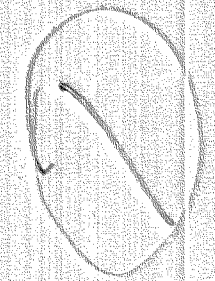
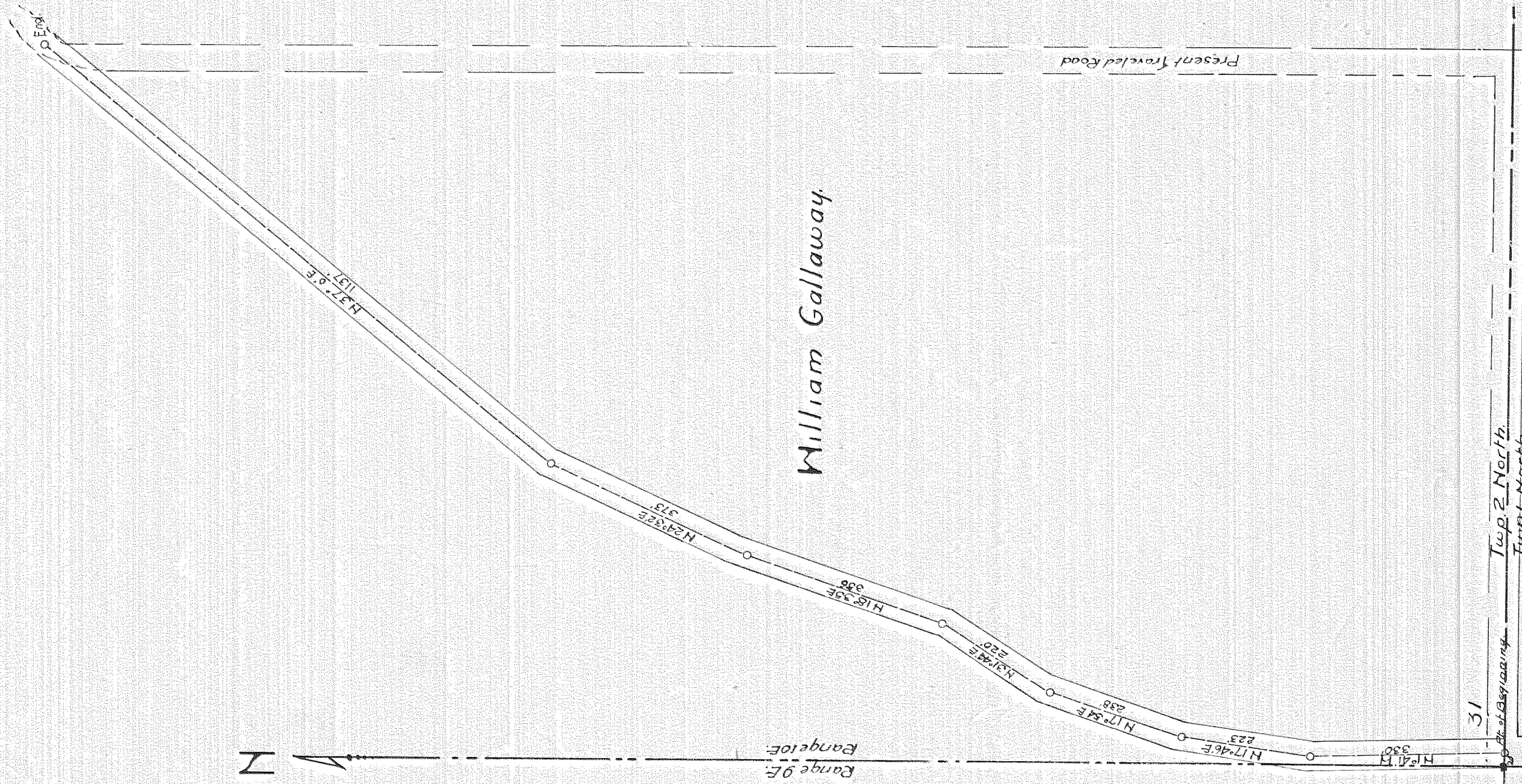


NO. 113.
HOLSTEEN ROAD
 In S 1/4 Sec 31, T. 2 N., R. 10 E., N.M.
 Length 2880 ft. Width 50 ft.
 Max. Grade 2.5%
 Scale 1" = 200 ft.
 May 12th 1919
 Hood River, Ore.
 A.R. Cruikshank
 Co. Sur.



057507 4-400