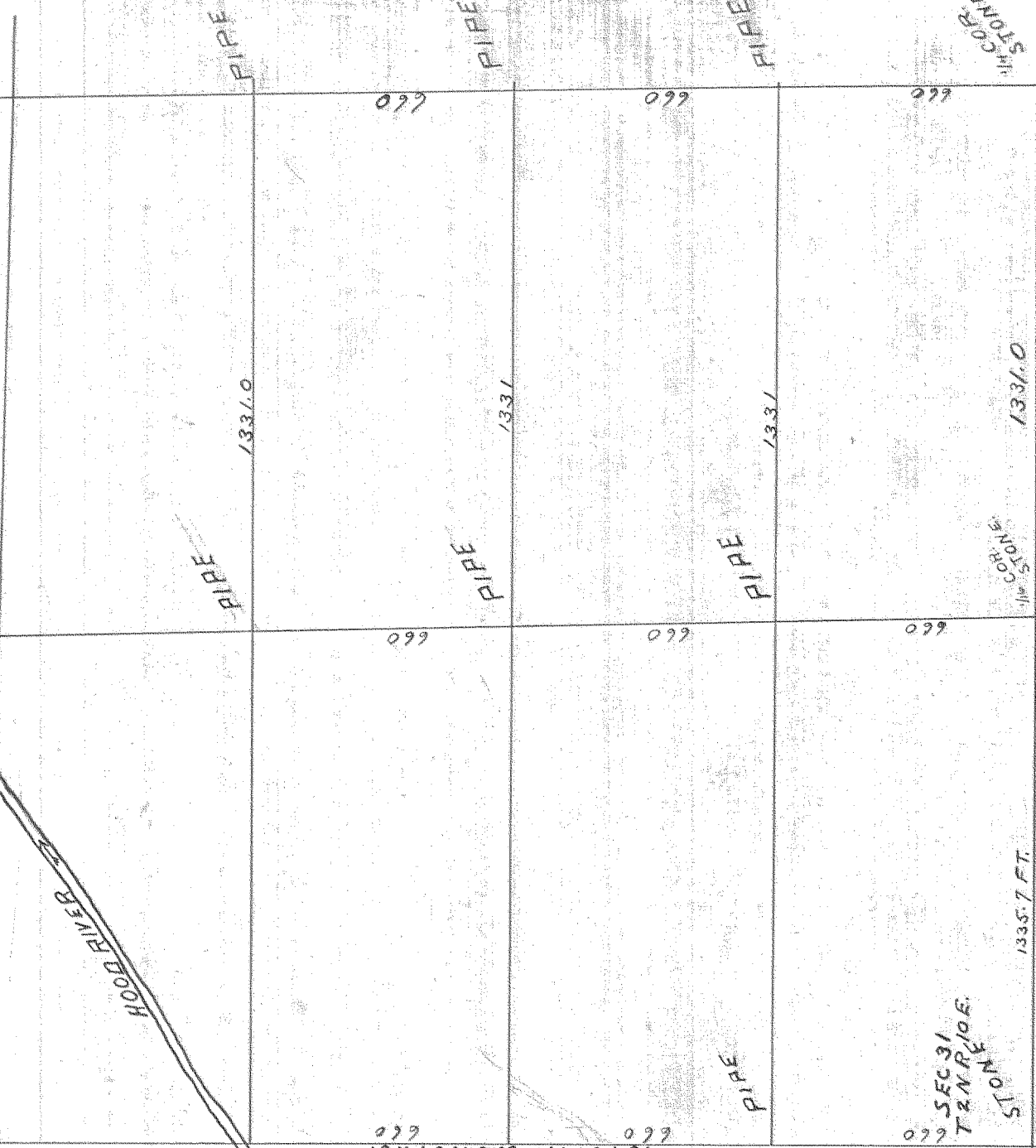
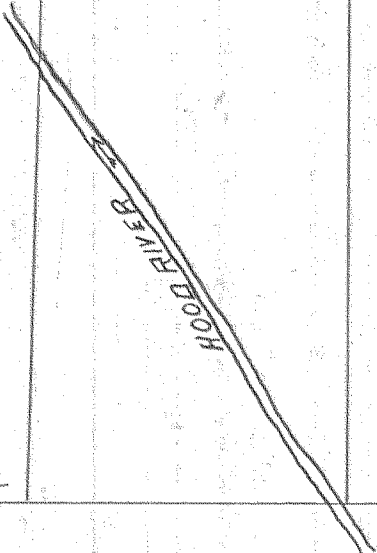


LAND OF F. S. HOLSTEEN
IN

E.W. 1/4 of Sec. 31. T.P. 2-N. R. 9. 10-E. - W.M.

1/4 COR.



2640 FT. U.S. NOTES.
660
660

SEC. 36
T2N R9E

SEC. 31
T2N R9E

STONE

SEC. 6.
T1N R9E

1335.7 FT.

SCALE 400 FT = 1 INCH. 7-28-09



0571 P. 4-3-95

F.M. MORSE