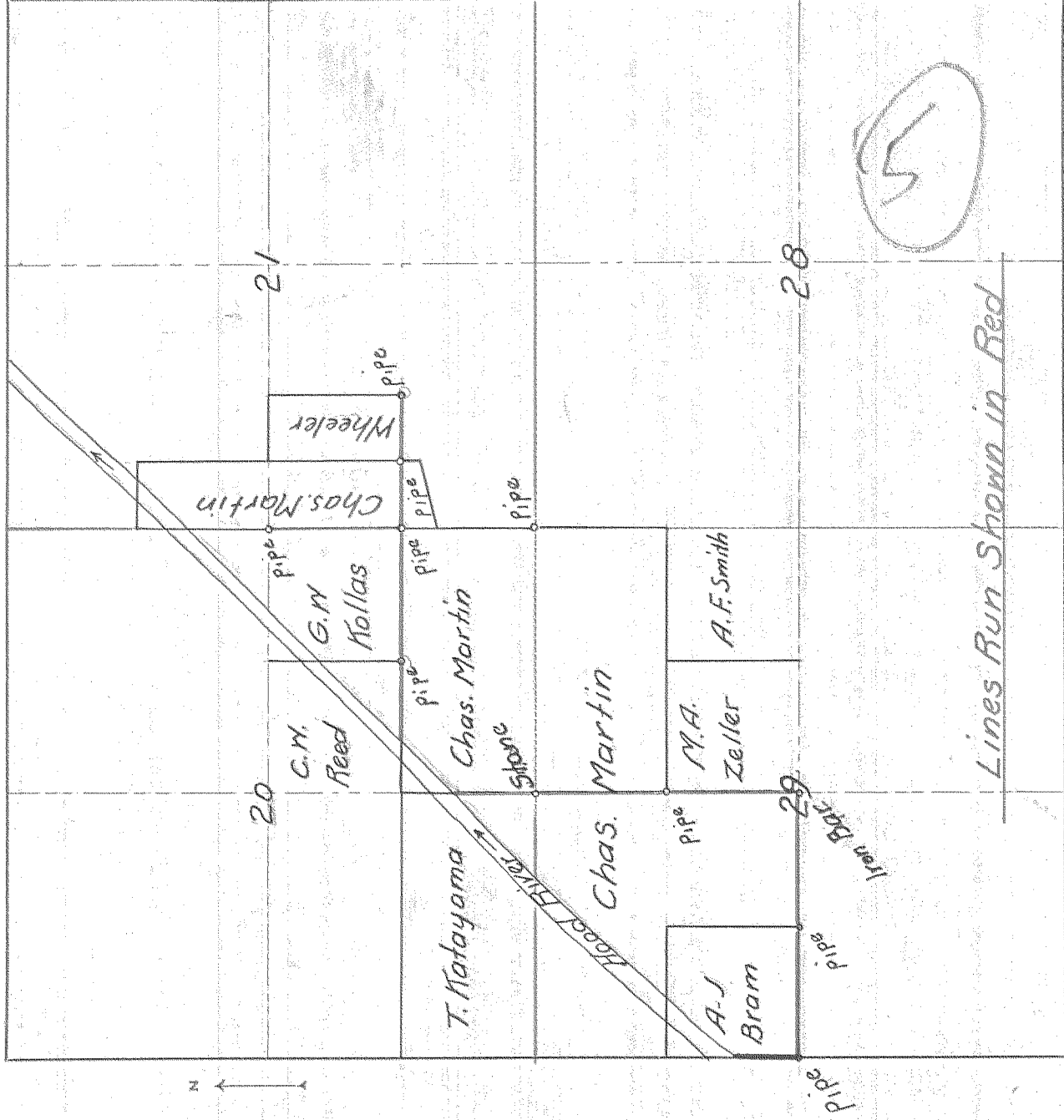


SURVEY IN 20 SECT 29 TWP 2N RANGE 10 EAST W. M.

FOR Chas. Martin DATE Apr. 27, 1937



Scale 1 inch = 1600ft.

I do hereby certify that this sketch was made from notes taken during an actual survey by me on Apr 21-27 1937, and that it correctly represents the field work of said survey.

Edw. Hobson
Deputy County Surveyor
Hood River County, Oregon

Helpers V.D. Lill, Walter Nykol, Ernie Wright

0566