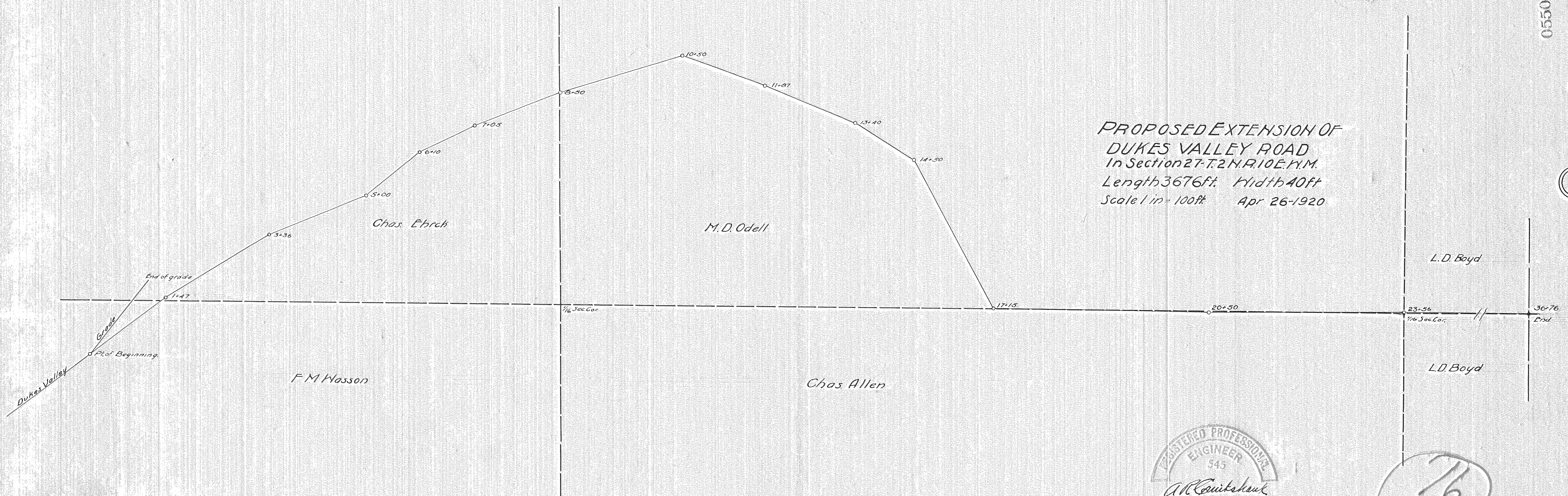
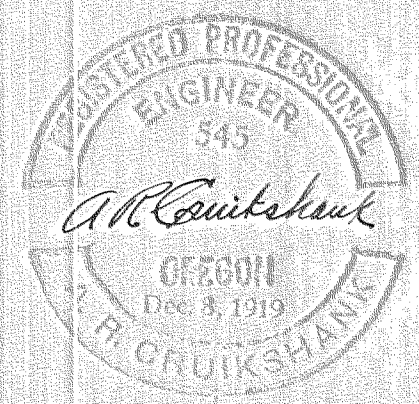


3600 FT. DISTANCE FROM THE CENTERLINE TO THE PROPERTY LINE

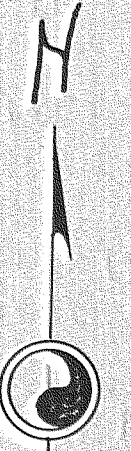


PROPOSED EXTENSION OF  
 DUKES VALLEY ROAD  
 In Section 27-T.2N.R.10E.M.  
 Length 3676ft. Width 40ft  
 Scale 1 in = 100ft Apr 26-1920



76

0550



#4-364