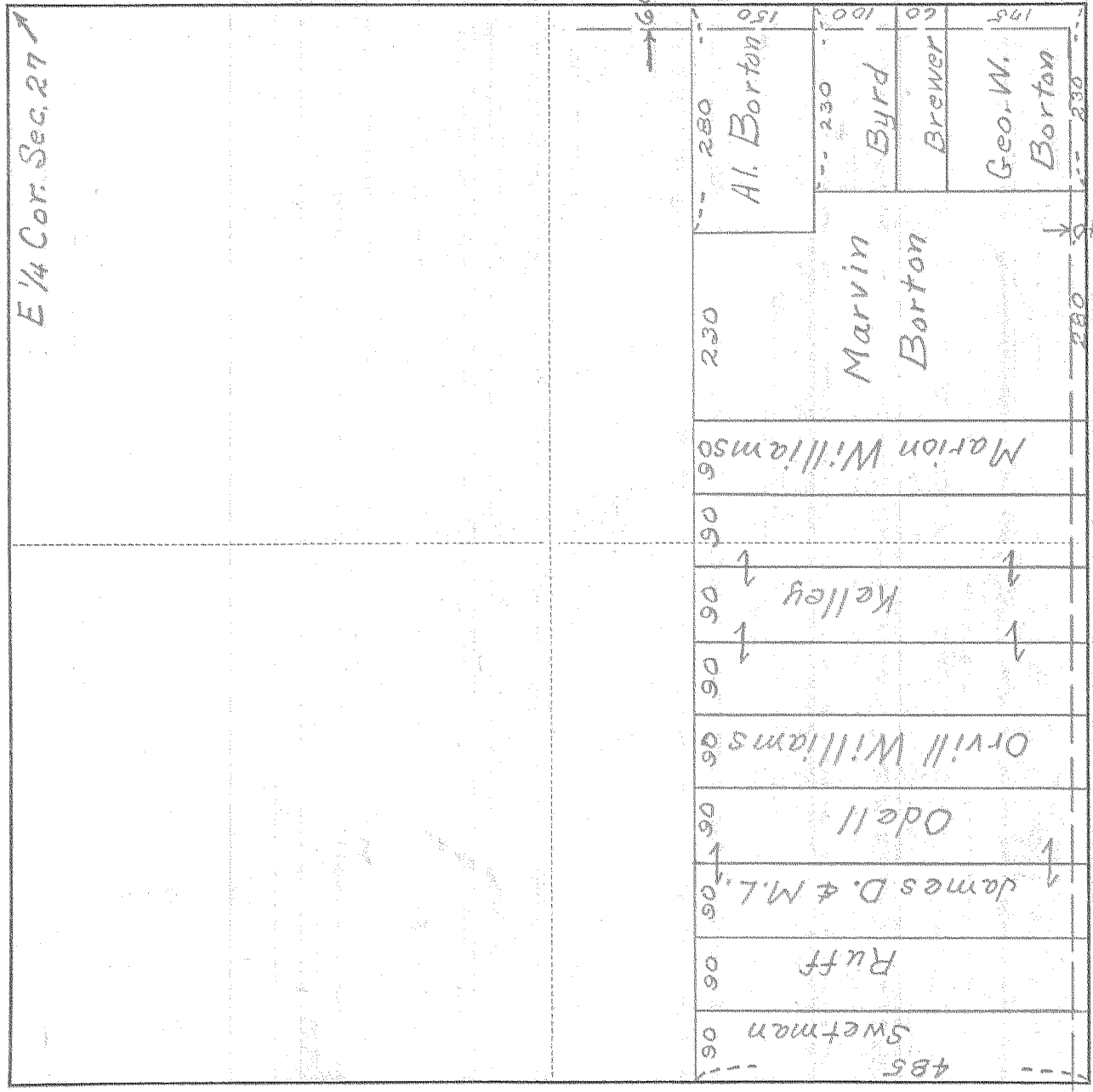


SURVEY IN NE 1/4 of SE 1/4 SECT. 27, TWP. 2N RANGE 10, EAST W. M.

FOR Geo. W. Borton DATE Oct 29, 1947



I do hereby certify that this sketch was made from notes taken during an actual survey by me on Oct. 20 1947, and that it correctly represents the field work of said survey.

Douglas A. Button
Deputy County Surveyor
Hood River County, Oregon

18

Helpers

0548 #4-355

KILHAM 16297