

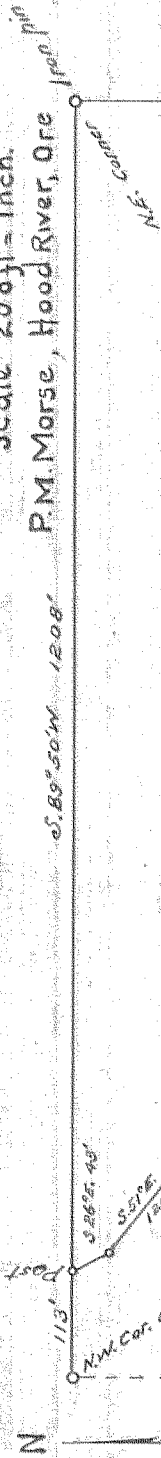
PART OF THE
S.W. 1/4 of Sec. 27, T2N, R10E.

owned by

AUGUST NIEHANS

Scale 200ft = Inch.

P.M. Morse, Hood River, Ore



N.W. Corner
113

Post

N.W. Cor. of SW 1/4 of SE 1/4 Sec. 27
T. 2 N. R. 10 E.

CENTER OF
SW 1/4 OF
SE 1/4
SEC. 27
T. 2 N. R. 10 E.

113

S. 89° 50' W

1208'

1100'

110'

160'

110'

1100'

S. 86° 25' 40'

S. 51° 00' E

120'

S. 26° 52' S

S. 109° 15' 25'

S. 25° 24' E

110'

S. 53° 30' W

140'

S. 76° 00' E

S. 84° 15' E

140'

S. 89° 30' E

546'

910'

1100'

1100'

1100'

S. 89° 50' W

4110'

1100'

1100'

1100'

1100'

1100'

1100'

1100'

S. 89° 50' W

1100'

1100'

1100'

1100'

1100'

1100'

1100'

1100'

S. 89° 50' W

1100'

1100'

1100'

1100'

1100'

1100'

1100'

1100'

S. 89° 50' W

1100'

1100'

1100'

1100'

1100'

1100'

1100'

1100'

S. 89° 50' W

1100'

1100'

1100'

1100'

1100'

1100'

1100'

1100'

S. 89° 50' W

1100'

1100'

1100'

1100'

1100'

1100'

1100'

1100'

S. 89° 50' W

1100'

1100'

1100'

1100'

1100'

1100'

1100'

1100'

S. 89° 50' W

1100'

1100'

1100'

1100'

1100'

1100'

1100'

1100'

S. 89° 50' W

1100'

1100'

1100'

1100'

1100'

1100'

1100'

1100'

S. 89° 50' W

1100'

1100'

1100'

1100'

1100'

1100'

1100'

1100'

S. 89° 50' W

1100'

1100'

1100'

1100'

1100'

1100'

1100'

1100'

S. 89° 50' W

1100'

1100'

1100'

1100'

1100'

1100'

1100'

1100'

S. 89° 50' W

1100'

1100'

1100'

1100'

1100'

1100'

1100'

1100'

S. 89° 50' W

1100'

1100'

1100'

1100'

1100'

1100'

1100'

1100'

S. 89° 50' W

1100'

1100'

1100'

1100'

1100'

1100'

1100'

1100'

S. 89° 50' W

1100'

1100'

1100'

1100'

1100'

1100'

1100'

1100'

S. 89° 50' W

1100'

1100'

1100'

1100'

1100'

1100'

1100'

1100'

S. 89° 50' W

1100'

1100'

1100'

1100'

1100'

1100'

1100'

1100'

S. 89° 50' W

1100'

1100'

1100'

1100'

1100'

1100'

1100'

1100'

S. 89° 50' W

1100'

1100'

1100'

1100'

1100'

1100'

1100'

1100'

S. 89° 50' W

1100'

1100'

1100'

1100'

1100'

1100'

1100'

1100'

S. 89° 50' W

1100'

1100'

1100'

1100'

1100'

1100'

1100'

1100'

S. 89° 50' W

1100'

1100'

1100'

1100'

1100'

1100'

1100'

1100'

S. 89° 50' W

1100'

1100'

1100'

1100'

1100'

1100'

1100'

1100'

S. 89° 50' W

1100'

1100'

1100'

1100'

1100'

1100'

1100'

1100'

S. 89° 50' W

1100'

1100'

1100'

1100'

1100'

1100'

1100'

1100'

S. 89° 50' W

1100'

1100'

1100'

1100'

1100'

1100'

1100'

1100'

S. 89° 50' W

1100'

1100'

1100'

1100'

1100'

1100'

1100'

1100'

S. 89° 50' W

1100'

1100'

1100'

1100'

1100'

1100'

1100'

1100'

1/3

SEC. 27

N. 89° 50' E. 910

SEC. 34

44-357

0545

April 7, 1910.