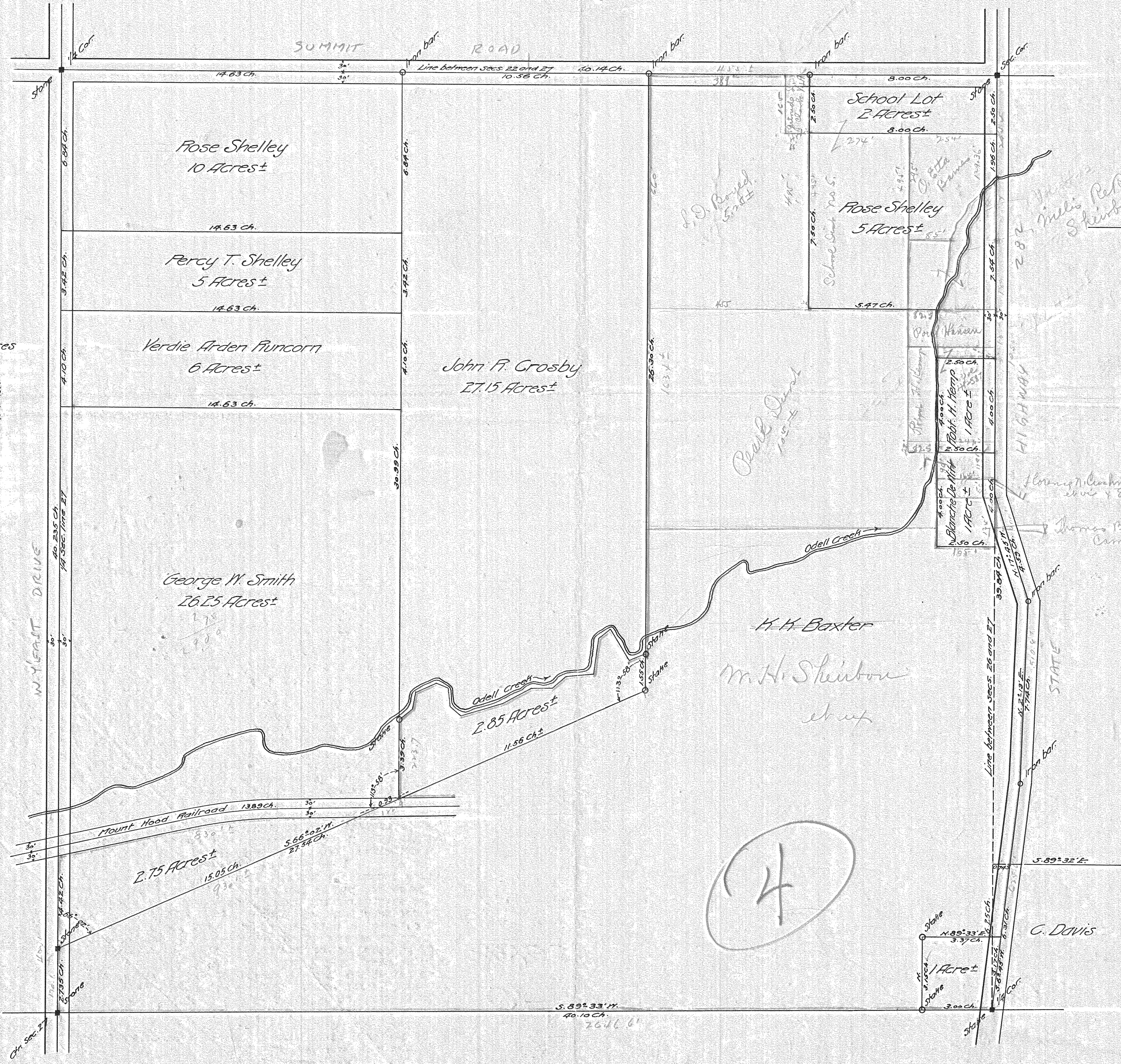


PLAT OF LANDS OF K. K. BAXTER

R. LIVINGSTONE, AGENT.

In the N.E. 1/4 of Section 27, T. 2 N. - R. 10 E. W. 11.
Wasco County, Oregon
Scale 1" = 3 Chains - Nov. 8, 1907.

John L. Anderson Surveyor.



Courses and distances along Odell Creek:
 S. 68° 00' N. 0.73 Ch.
 N. 31° 00' W. 1.575 Ch.
 S. 50° 00' W. 0.639 Ch.
 S. 8° 00' W. 1.501 Ch.
 S. 85° 00' W. 1.253 Ch.
 S. 50° 30' W. 0.769 Ch.
 We west. 0.915 Ch.
 S. 63° 00' W. 1.202 Ch.
 S. 74° 00' W. 1.719 Ch.
 N. 30° 00' W. 0.617 Ch.
 N. 5° 00' W. 0.80 Ch.
 N. 65° 00' W. 0.566 Ch.
 S. 65° 00' W. 1.045 Ch.
 S. 12° 00' W. 0.706 Ch.
 S. 51° 00' W. 0.650 Ch.