

SW 1/4, NW 1/4, OF SEC. 27, T. 2 N., R. 10 E.

OWNED by

H. T. PARR

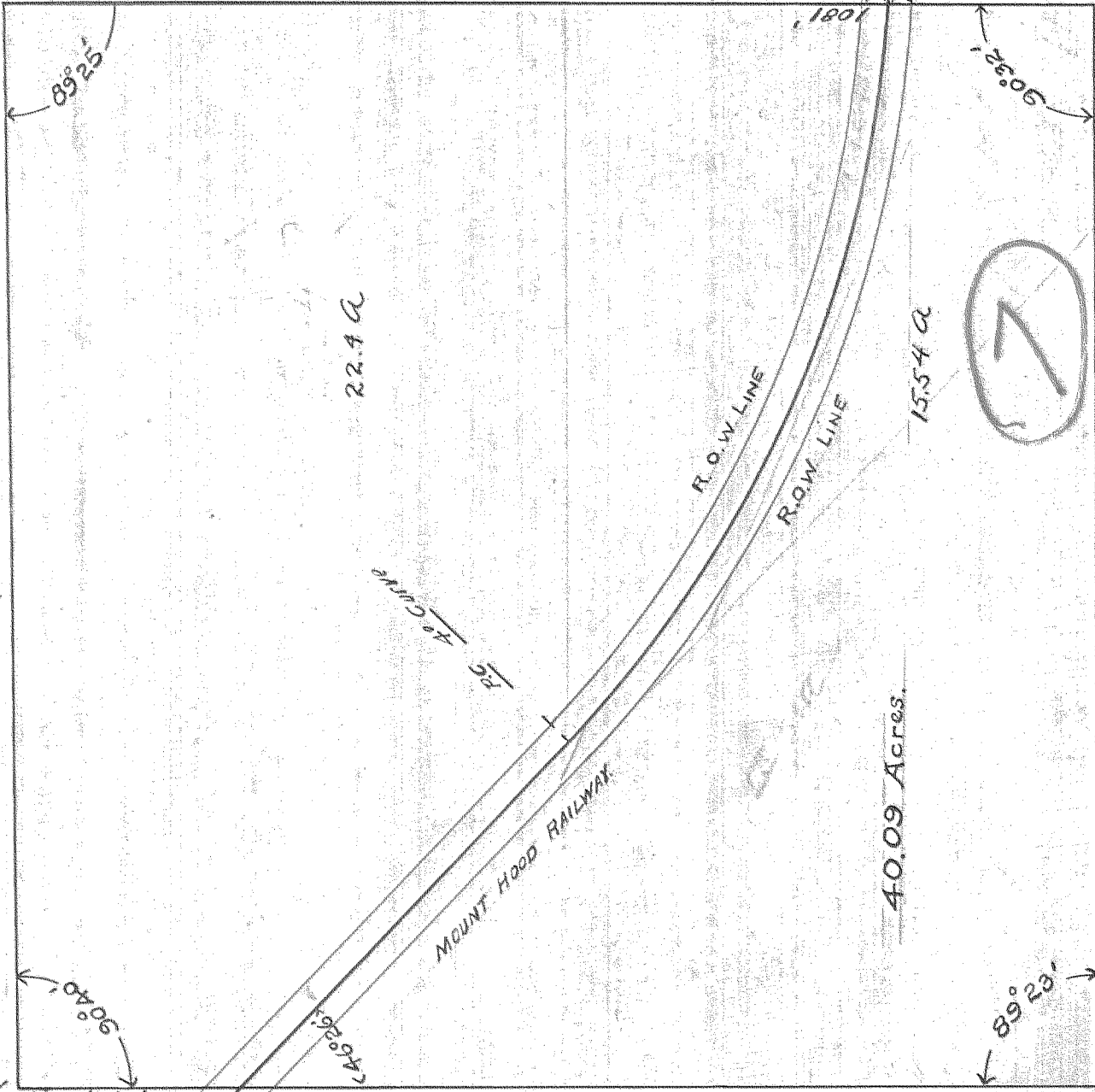
Scale 200' = 1 inch.

OFFICE OF
P. M. MORSE
Hood River, Ore.

1" pipe

Post - 274.7 -

1321'



1322'

40.09 Acres.

1323'

0542 # 4-358