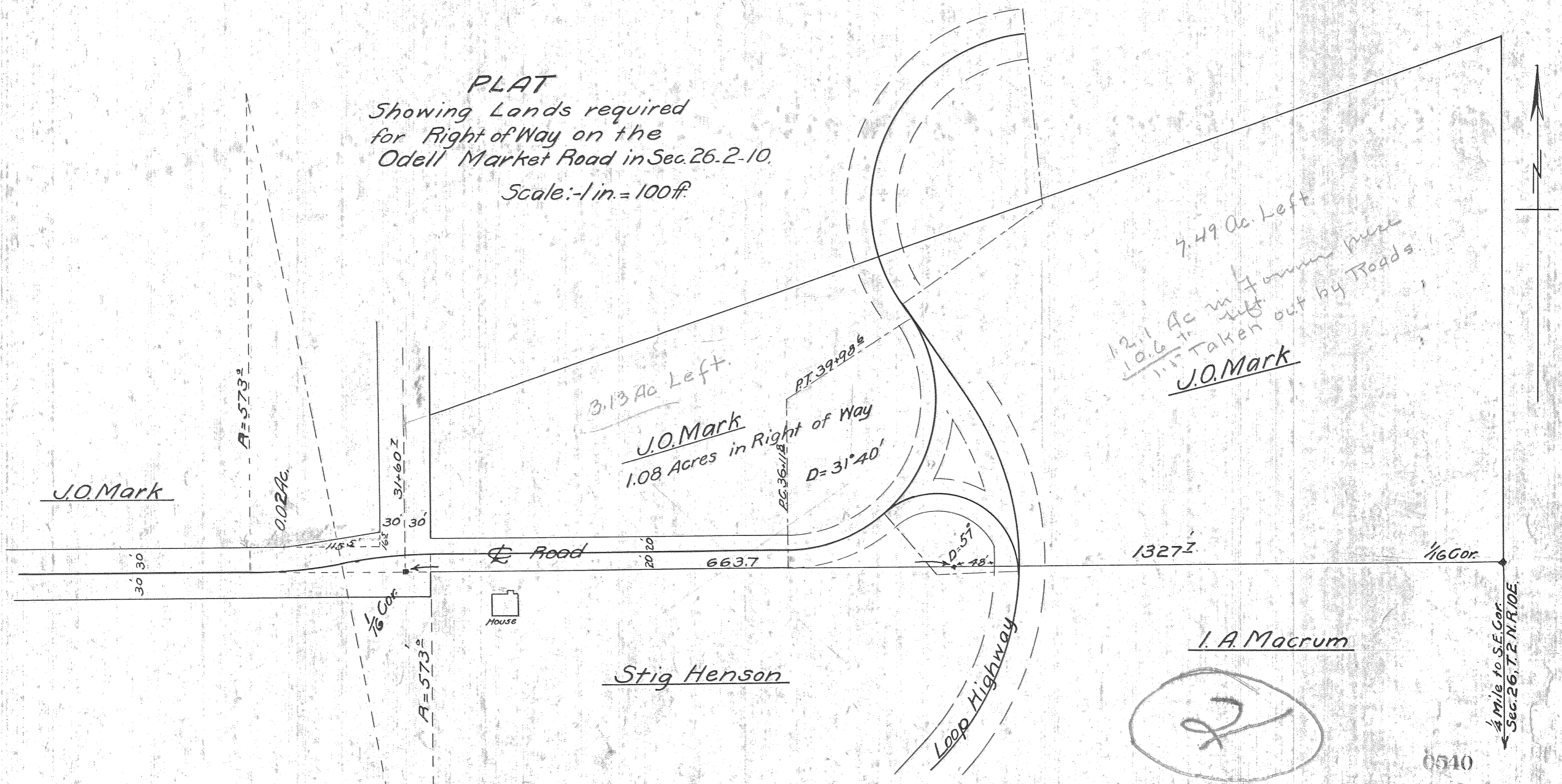


PLAT  
 Showing Lands required  
 for Right of Way on the  
 Odell Market Road in Sec. 26.2-10.  
 Scale: - 1 in. = 100 ft.



3.13 Ac. Left.

J.O. Mark  
 1.08 Acres in Right of Way

7.49 Ac. Left.  
 12.1 Ac. in former piece  
 10.6 Ac. taken out by Roads.  
 J.O. Mark

J.O. Mark

Stig Henson

I. A. Macrum

1/4 Mile to S.E. Cor.  
 Sec. 26, T. 2 N. R. 10 E.

0510

# 4-350

