

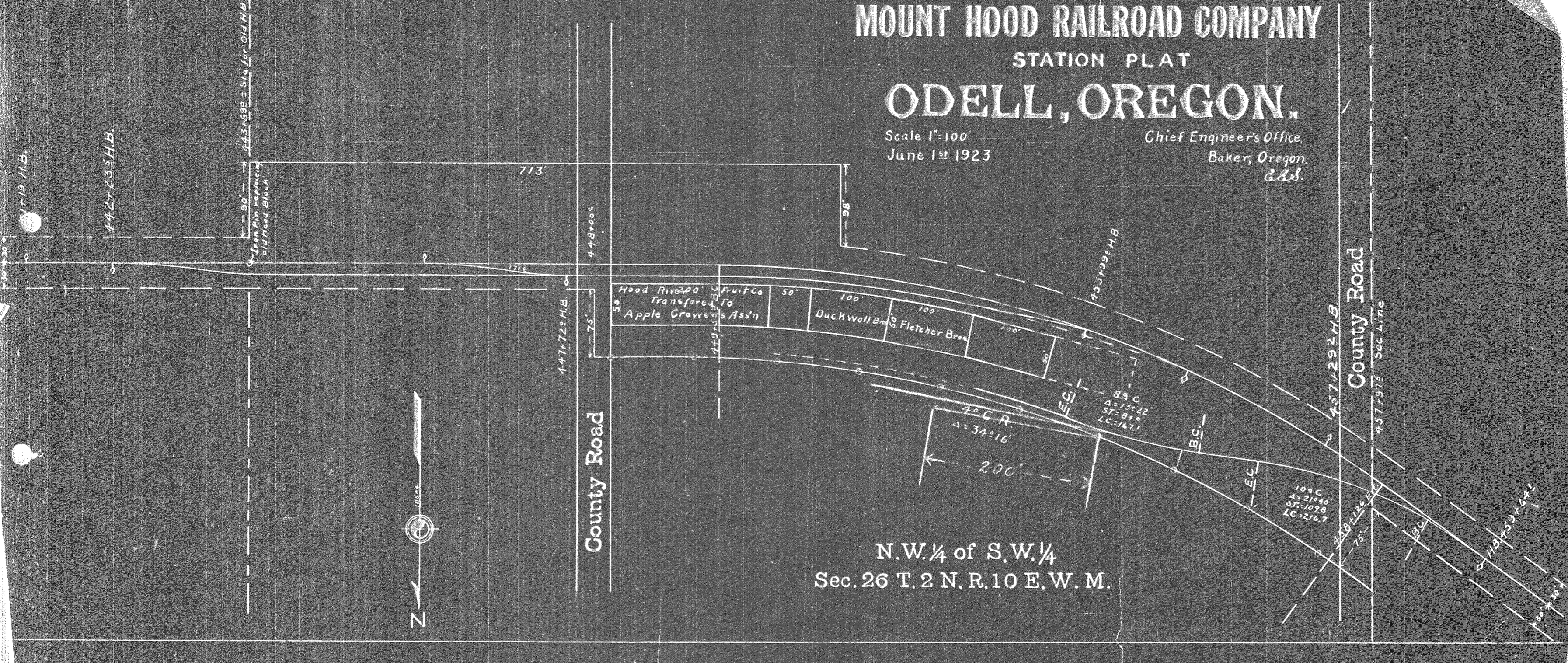
# MOUNT HOOD RAILROAD COMPANY

STATION PLAT

# ODELL, OREGON.

Scale 1"=100'  
June 1<sup>st</sup> 1923

Chief Engineer's Office.  
Baker, Oregon.  
C.E.S.



N.W. 1/4 of S.W. 1/4  
Sec. 26 T. 2 N. R. 10 E. W. M.

339