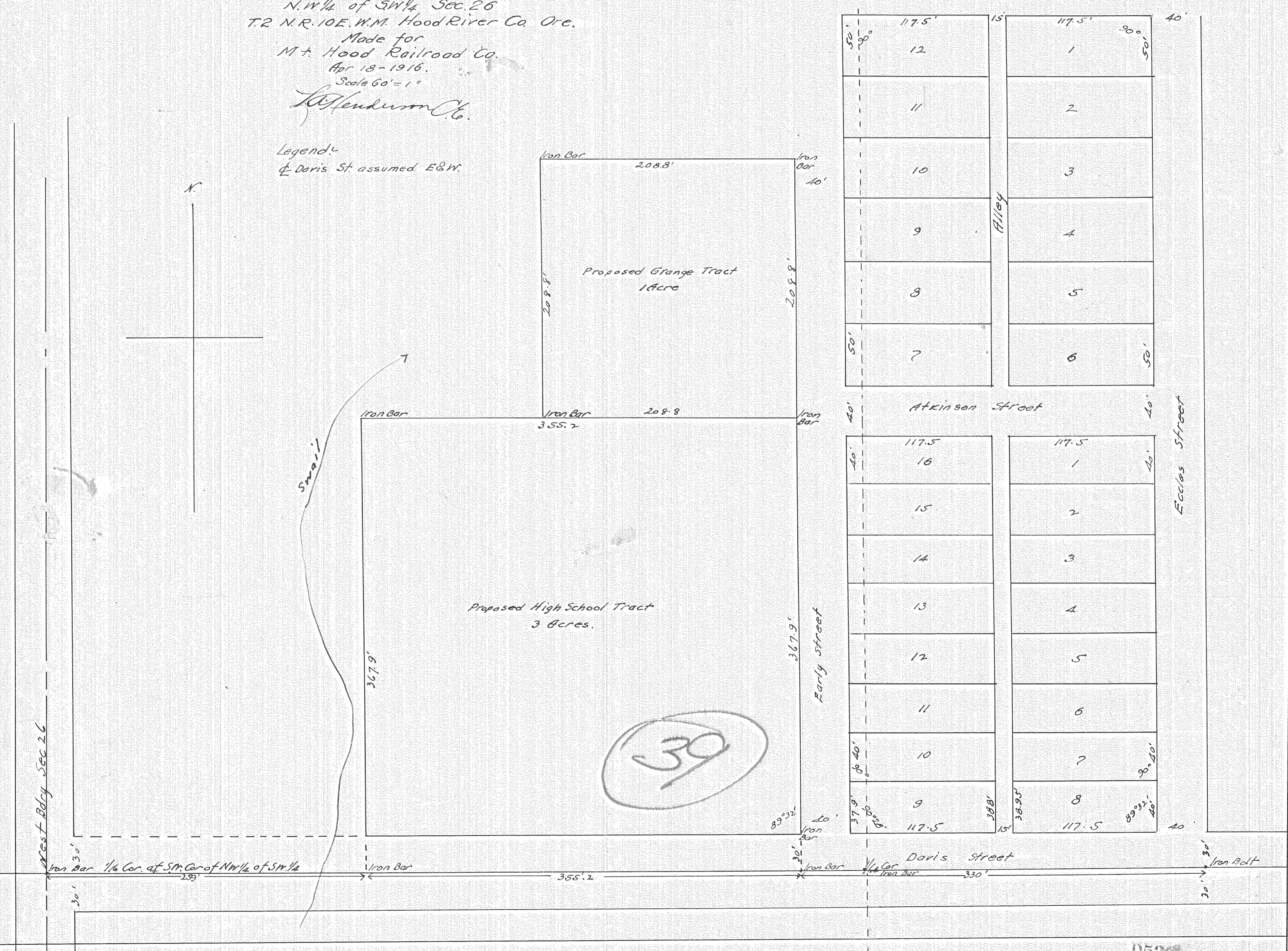


PLAT OF SURVEY  
of  
Proposed Grange and High School Tracts.  
in  
N.W. 1/4 of SW 1/4 Sec. 26  
T. 2 N. R. 10 E. W. M. Hood River Co. Ore.  
Made for  
M. Hood Railroad Co.  
Apr 18-1916.  
Scale 60' = 1"

*L. Henderson Co.*

Legend:  
☒ Davis St. assumed E&W.



11539  
H4-326