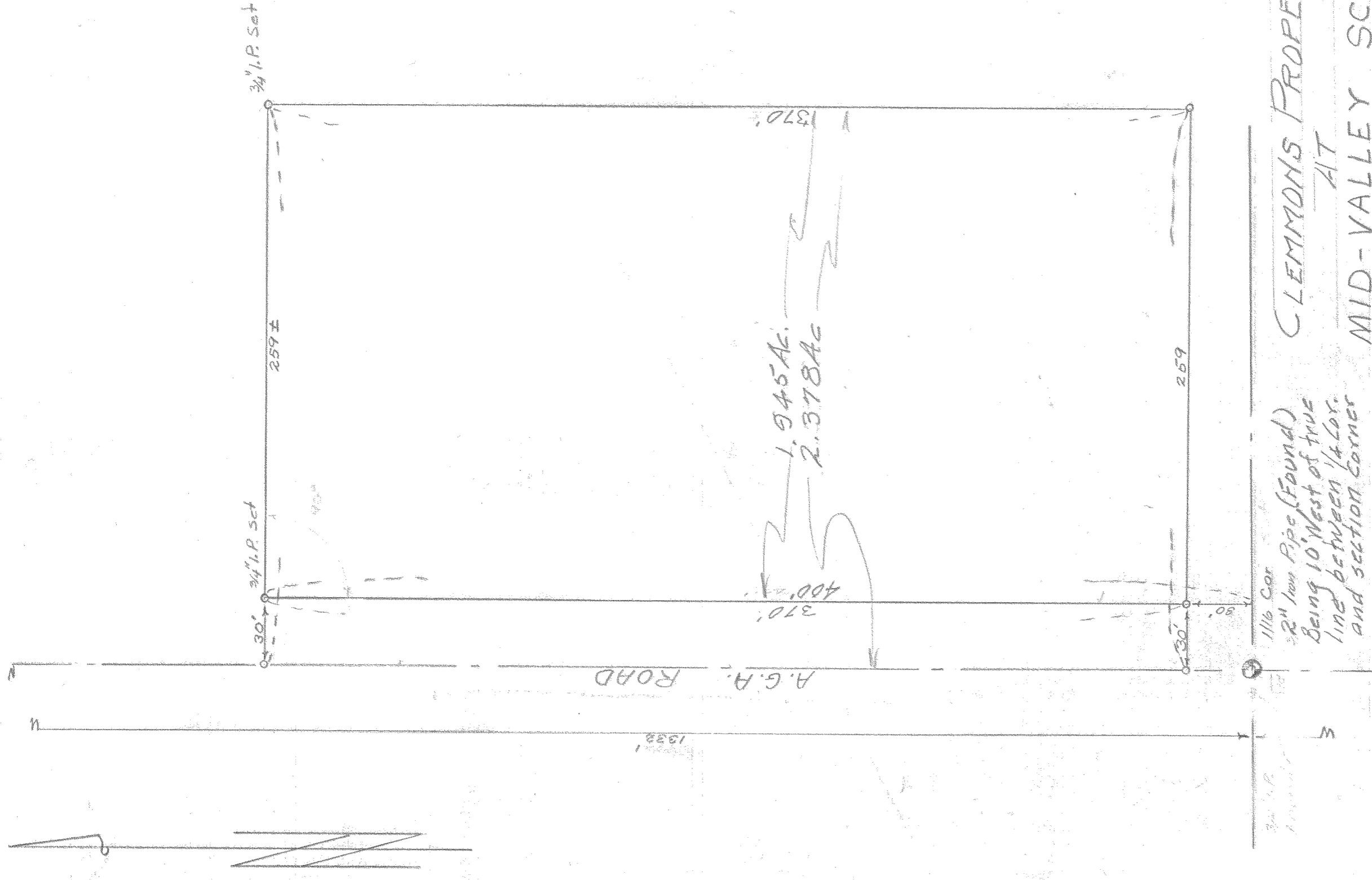
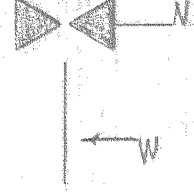


1/4 COR Found



A.G.A. ROAD

1.945 Ac.  
2.378 Ac

2" Iron Pipe (Found)  
Being 10' West of true  
line between 1/4 Cor.  
and section corner

CLEMMONS PROPERTY  
AT  
MID-VALLEY SCHOOL  
SW 1/4 S26 T2N R10E

1/4 COR - 2" Iron Found

Scale: 1" = 50'  
Date: 12-3-59

18

REGISTERED PROFESSIONAL ENGINEER  
MARTIN C. PENNING  
NOV. 7, 1957  
CRESCENT, OREGON