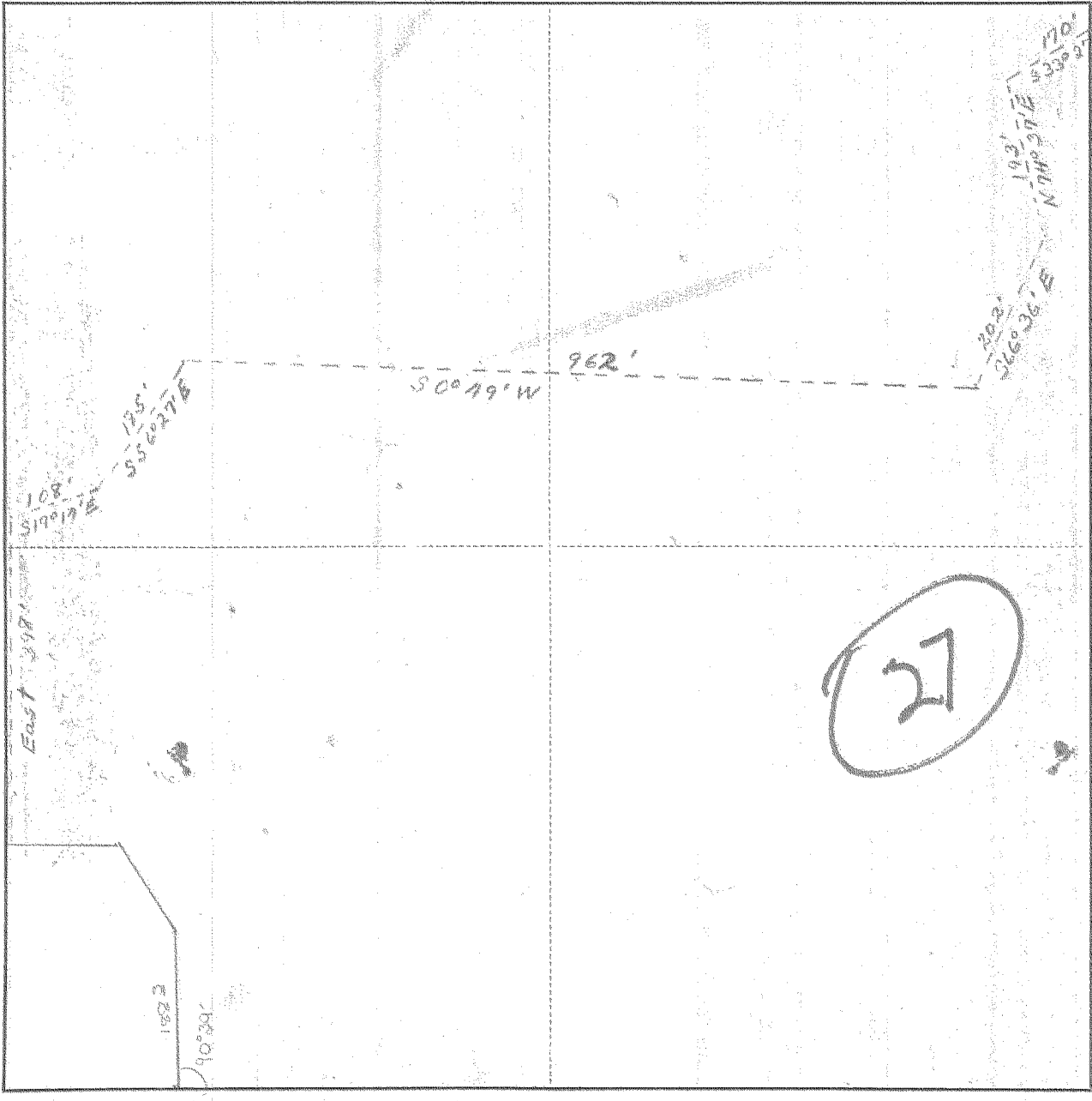


SURVEY IN SE 24 of NE 1 SECT. 26 TWP. 2N RANGE 10, EAST W. M.

FOR George Annala DATE \_\_\_\_\_



Scale 1 inch = 200 ft

I do hereby certify that this sketch was made from notes taken during an actual survey by me on \_\_\_\_\_ 19\_\_\_\_, and that it correctly represents the field work of said survey.

Raymond H. Butten  
County Surveyor  
Hood River County, Oregon

Helpers John Thomas

0527

# 4-339

KLHAM 18287