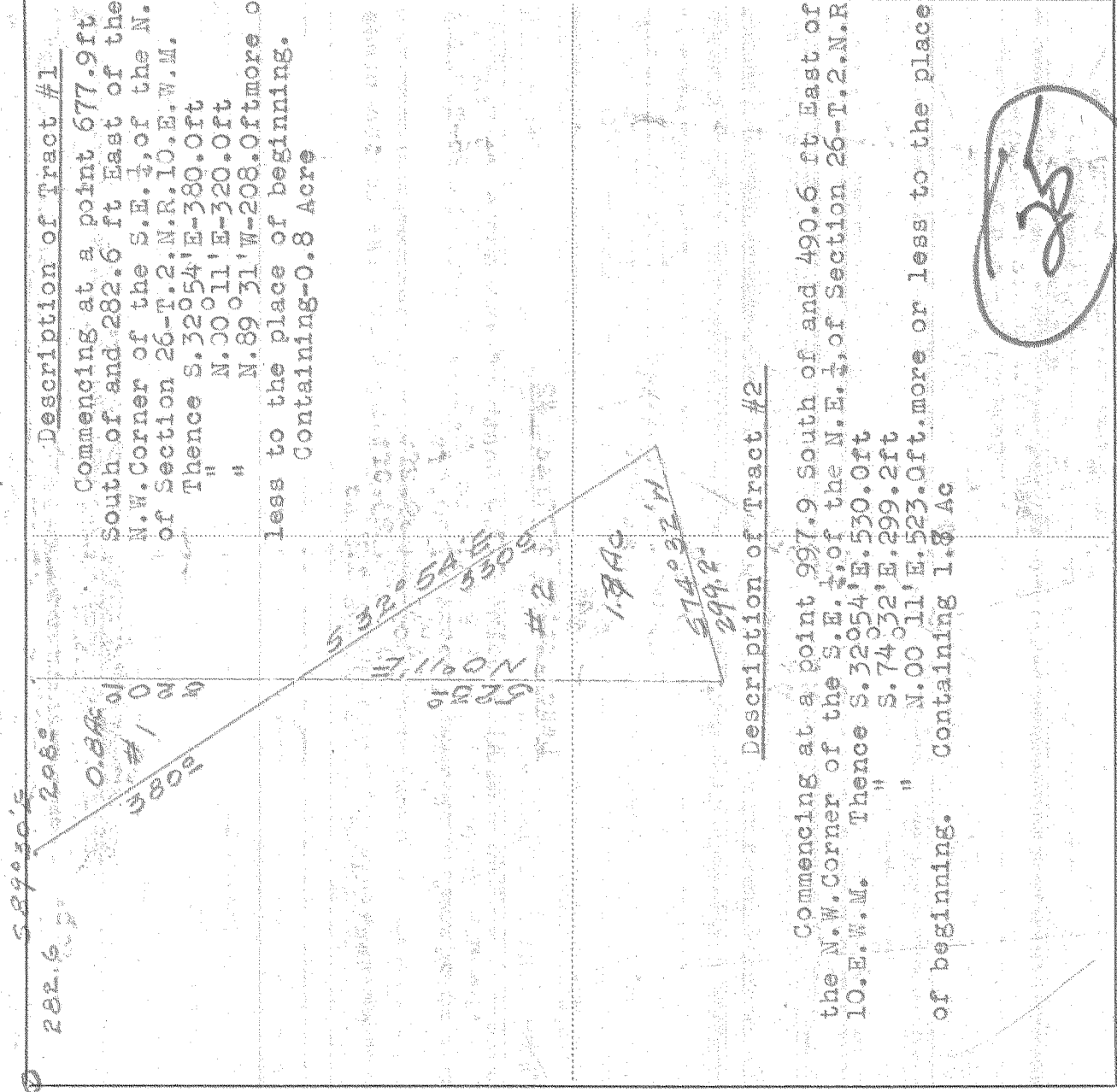


SURVEY IN N.E. 1 SECT 26 TWP 2 North RANGE 10 EAST W.M.

FOR J.J. Annala

DATE 3/15/35



Description of Tract #1

Commencing at a point 677.9 ft South of and 282.6 ft East of the N.W. Corner of the S.E. 1/4 of the N.E. 1/4 of Section 26-T.2.N.R.10.E.W.M. Thence S. 32° 54' E-380.0 ft " N. 00° 11' E-320.0 ft " N. 89° 31' W-208.0 ft more or less to the place of beginning. Containing-0.8 Acre

Description of Tract #2

Commencing at a point 997.9 South of and 490.6 ft East of the N.W. Corner of the S.E. 1/4 of the N.E. 1/4 of Section 26-T.2.N.R. 10.E.W.M. Thence S. 32° 54' E-530.0 ft " S. 74° 32' E-299.2 ft " N. 00° 11' E-523.0 ft more or less to the place of beginning. Containing 1.8 Ac

225

Scale 1 inch = 200 feet

J.J. Annala

I do hereby certify that this sketch was made from notes taken during an actual survey by me on Feb. 1935, and that it correctly represents the field work of said survey.

Helpers W. J. Annala

County Surveyor  
Hood River County, Oregon

0523  
# 7-314