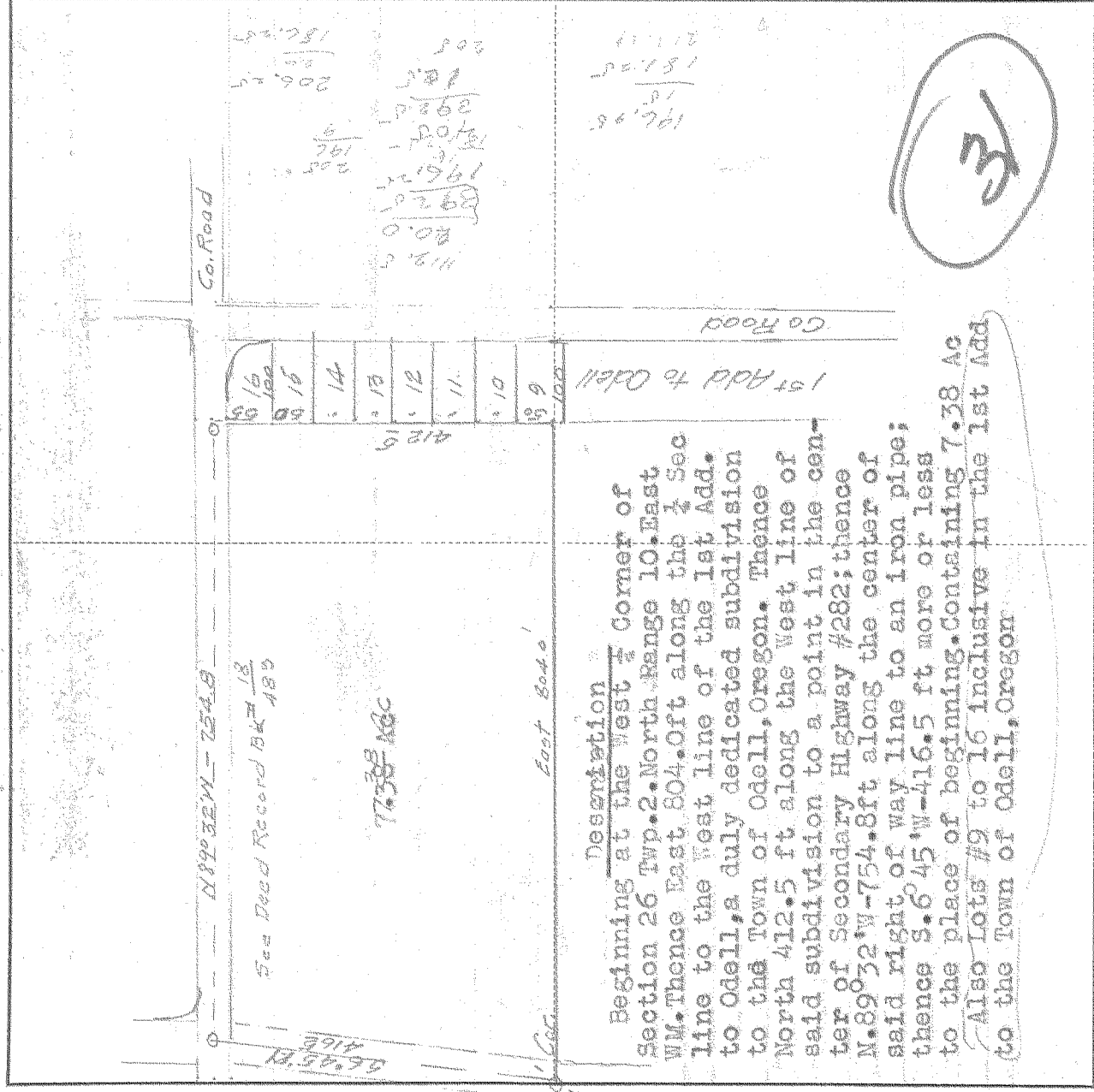


Plat and Description of SURVEY IN Block 4, SECT. 26, TWP. 22 North, RANGE 10, EAST W. M.

FOR Estimate DATE May 6, 1944



Scale 1 inch = 200 ft.

I do hereby certify that this sketch was made from notes taken during an actual survey by me on May 5 1944, and that it correctly represents the field work of said survey.

County Surveyor
Hood River County, Oregon

Helpers

0519

4-343

KELHAM 19287