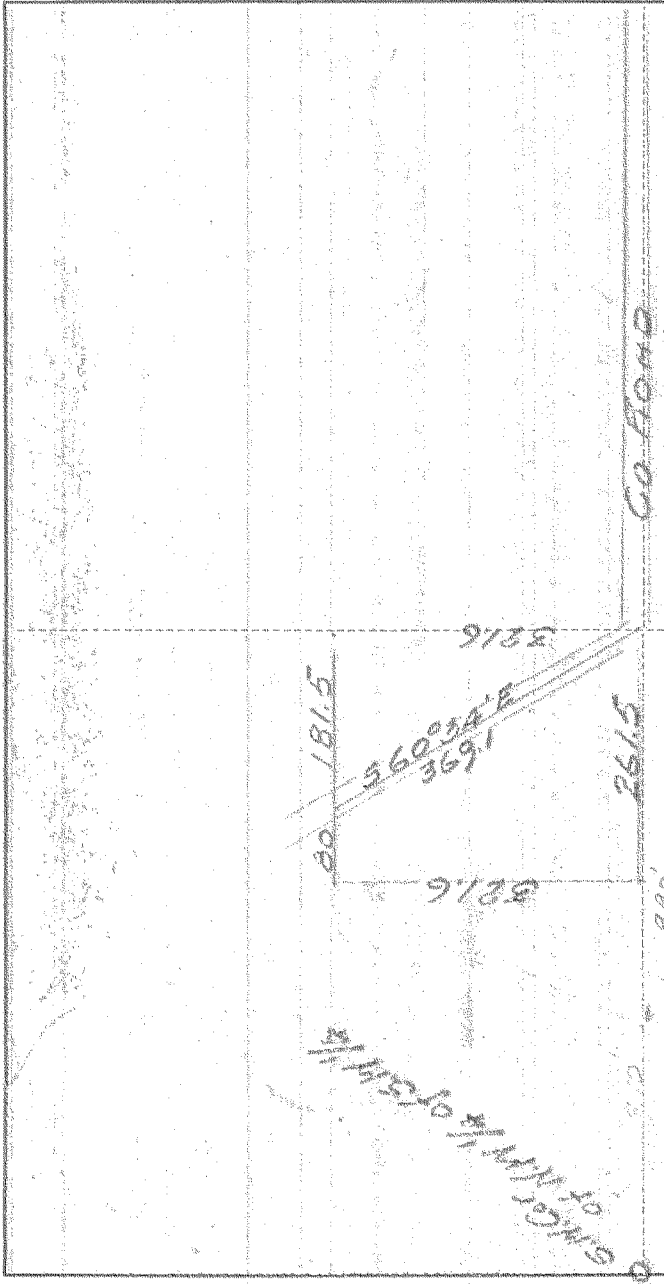


SURVEY IN S. 14 SECT. 25 TWP. 2 RANGE 10 EAST W. M.

FOR O.H. RHODES

DATE 1/27/31



*Description*

Commencing 990ft East from the S.N  
 Cor of N.W. 1/4 of S. 14. 1/4 of Sec. 25. Top 24. 17. 10. E  
 W.M. Thence West along 1/4 1/4 line 261.5 ft. Thence  
 North 321.6 ft. Thence East 80 ft. Thence S 60° 34' E  
 369.1 ft more or less to the place of Beginning  
 Containing 1.26 AC.

13

I do hereby certify that this sketch was made from notes taken during an actual survey made by me on Jan 27 1931, and that it correctly represents field work of said survey.

E.M. Hubbert

County Surveyor  
Hood River County, Oregon

Helpers W.H. Ponder

0504

#4-288