

944.95    318.40  
 187.59    63.68  
 56.27    19.10

51° 44' - 120

958.51    310.67  
 190.10    62.13  
 36.27    18.62  
 1196.64    391.42

95.05    31.07

560 53' W - 81.1

67.87    39.92  
 .87    48  
 .9    2  
 70.95    39.40

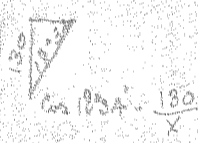
540° 2' + 86.3

61.19    51.53  
 4.59    3.86  
 23    13  
 66.01    55.52

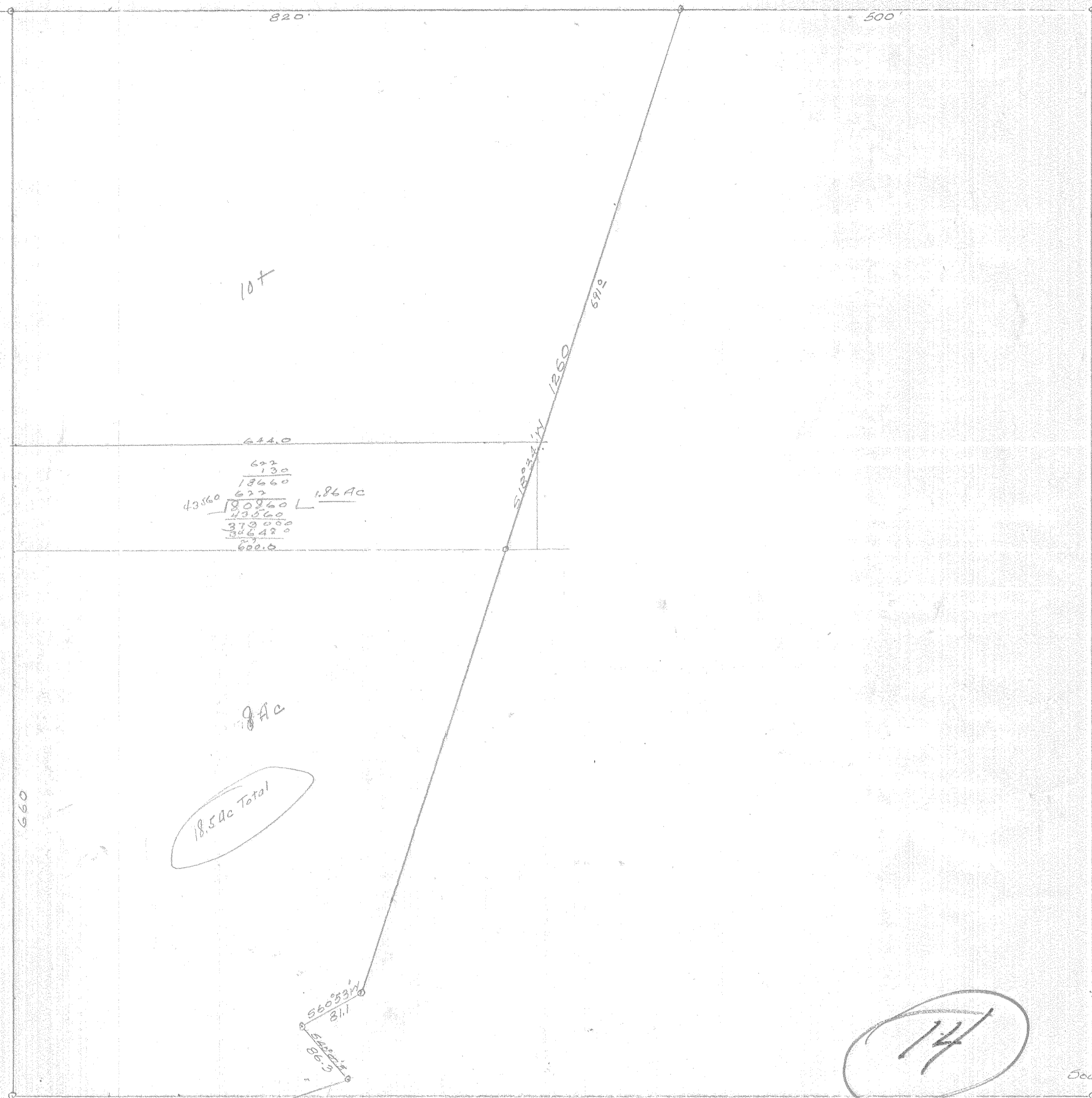
572 21' W - 396

285.89    90.96  
 85.76    27.29  
 572    1.82  
 377.96    120.07

1422.17    784.07



44795 | 100.0000 (137.1)  
 94771  
 352080  
 284380  
 676600  
 663560  
 1304



644.0  
 622  
 130  
 13660  
 622  
 180860 L 1.86 AC  
 43560  
 43560  
 3790000  
 306480  
 77  
 600.0

8 AC  
 18.5 Ac Total

14

South  
 6 Coz  
 Sec 25-2-10

572° 21' W  
 396

1422  
 660    1260  
 762    691  
 569

25,000

762  
 680  
 11447  
 721  
 600  
 437600

386  
 1600  
 1986  
 443  
 660  
 228780  
 29860  
 328680 L 85  
 304920  
 707600

920  
 386  
 1406  
 603  
 1320  
 600  
 3960

7920  
 195960 } 182  
 43560  
 36036  
 347480  
 128300

0199  
 #4-293

