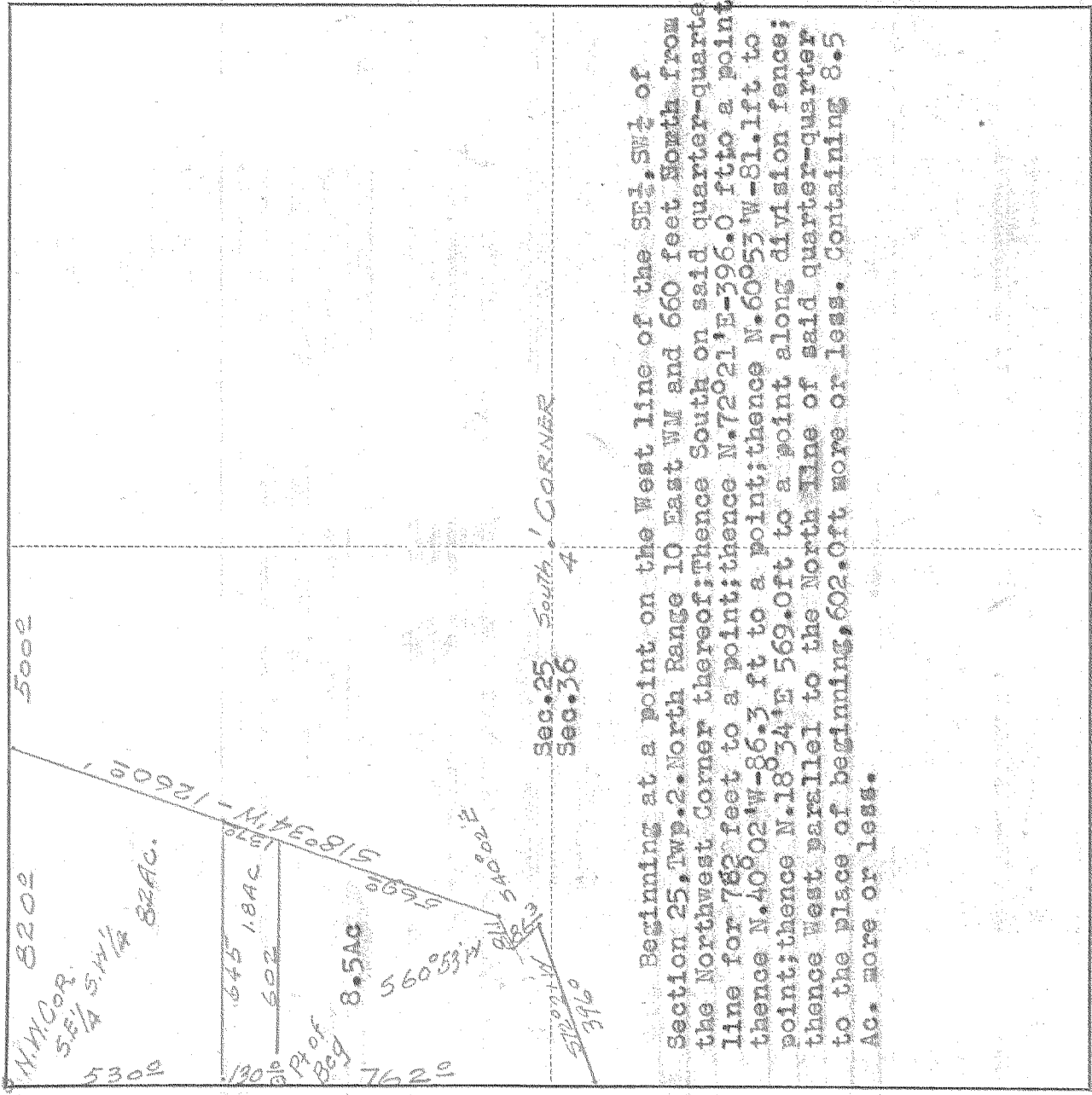


PLAT OF SURVEY IN SE1, SW1, SECT. 25, TWP. 2. North, RANGE 10, EAST W. M.

FOR W. Epley & M DATE Dec. 3, 1945



Beginning at a point on the West line of the SE1, SW1 of Section 25, Twp. 2. North Range 10 East WM and 660 feet North from the Northwest Corner thereof; Thence South on said quarter-quarter line for 762 feet to a point; thence N. 72° 21' E. 396.0 ft to a point; thence N. 40° 02' W. 86.3 ft to a point; thence N. 60° 53' W. 81.1 ft to a point; thence N. 18° 34' E. 569.0 ft to a point along division fence; thence West parallel to the North line of said quarter-quarter to the place of beginning, 602.0 ft more or less. Containing 8.5 AC. more or less.

Scale 1 inch = 400 feet

I do hereby certify that this sketch was made from notes taken during an actual survey by me on Dec. 3 19 45, and that it correctly represents the field work of said survey.

8

County Surveyor
Hood River County, Oregon

0498

Helpers

PL0344 102587

± 4-8 89