

# SURVEY

## LANDS OF RUDOLPH H. GROSSER

To segregate a tract to contain 20 acres, in W 1/2, N.E. 1/4, S.E. 1/4 Sec. 24-2-10  
As shown enclosed by red tinted lines on attached plat

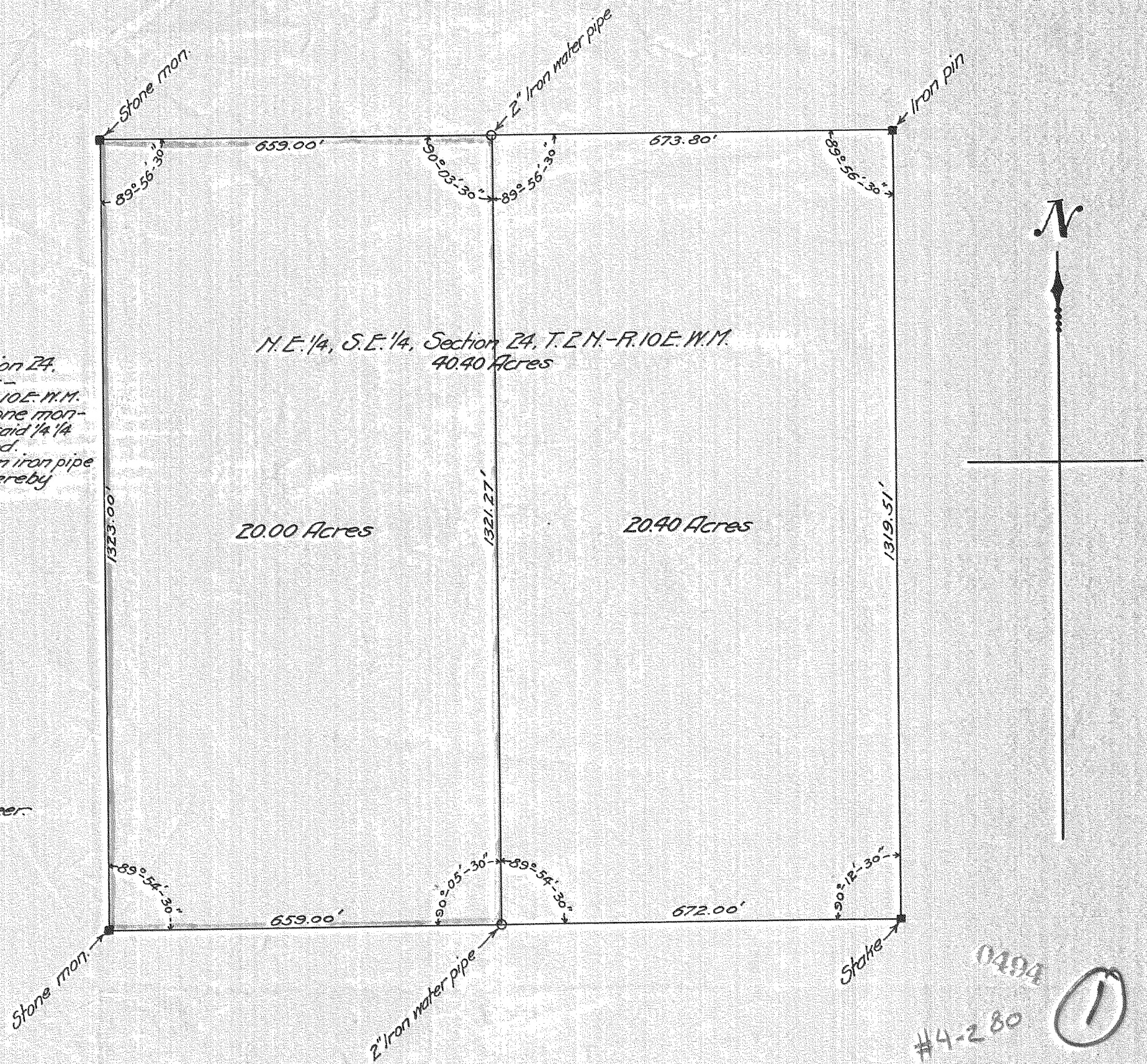
### Description

A piece of land containing twenty (20) acres, situated in the west 1/2 of the N.E. 1/4, S.E. 1/4 Section 24, T. 2 N. - R. 10 E. Willamette Meridian and which is more particularly described as follows -  
Beginning at a stone monument at the S.W. corner of the N.E. 1/4 of the S.E. 1/4 Sec. 24, T. 2 N. - R. 10 E. W.M.  
Running thence northerly along the west line of said 1/4 1/4 a distance of 1323 ft. to a stone monument at the north west corner of said 1/4 1/4. Thence easterly along the north line of said 1/4 1/4 a distance of 659 ft. to an iron pipe at the N.E. corner of the 20 acres hereby conveyed.  
Thence southerly and parallel with the west line of said 1/4 1/4 a distance of 1321.27 ft. to an iron pipe on the south line of said 1/4 1/4, said iron pipe marking the S.E. corner of said 20 acres hereby conveyed. Thence westerly the south line of said 1/4 1/4 659 ft. to the place of beginning

Note: - Corners found shown thus ■  
Corners set shown thus ○  
Work is guaranteed correct within one two hundredth of an acre

Hood River, Or. June 3, 1905 - Scale 1" = 200'

*Murray Kay* Civil Engineer.



0494  
#4-280  
①