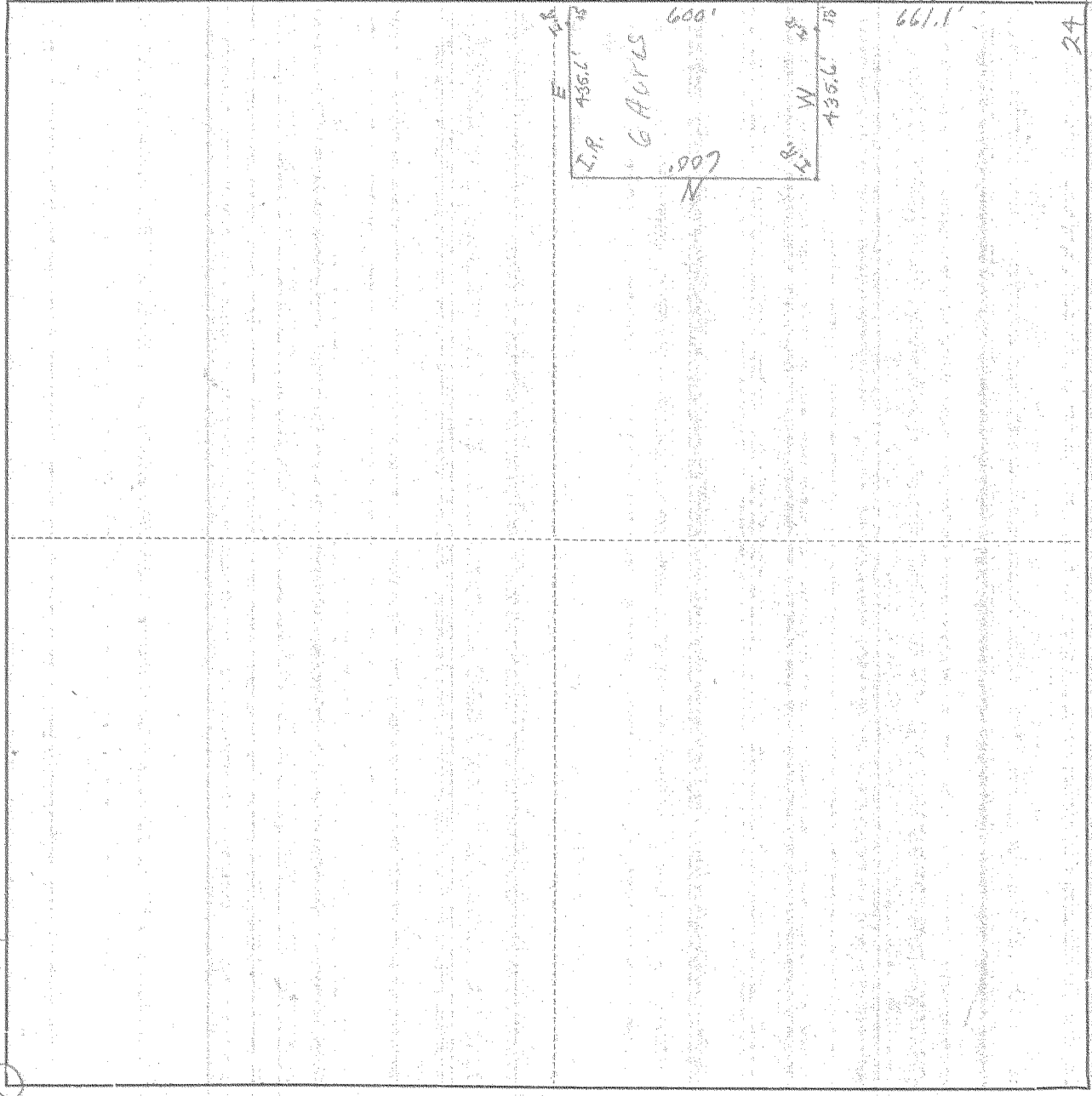


SURVEY IN SE 1/4, SECT. 27, TWP. 2 N, RANGE 10, EAST W. M.

FOR George Tonn
Center Sec 27

DATE 7/1/49

E 1/4 cor.



S 1/4 COR.

Scale 1 inch = 400'

24 19 58
25 30

I do hereby certify that this sketch was made from notes taken during an actual survey by me on 7/1 1949, and that it correctly represents field work of said survey.

R.P. Steves

County Surveyor Pro Tem
Hood River County, Oregon

Helpers John Chipley D.P. Mable

0488

#4-286

10