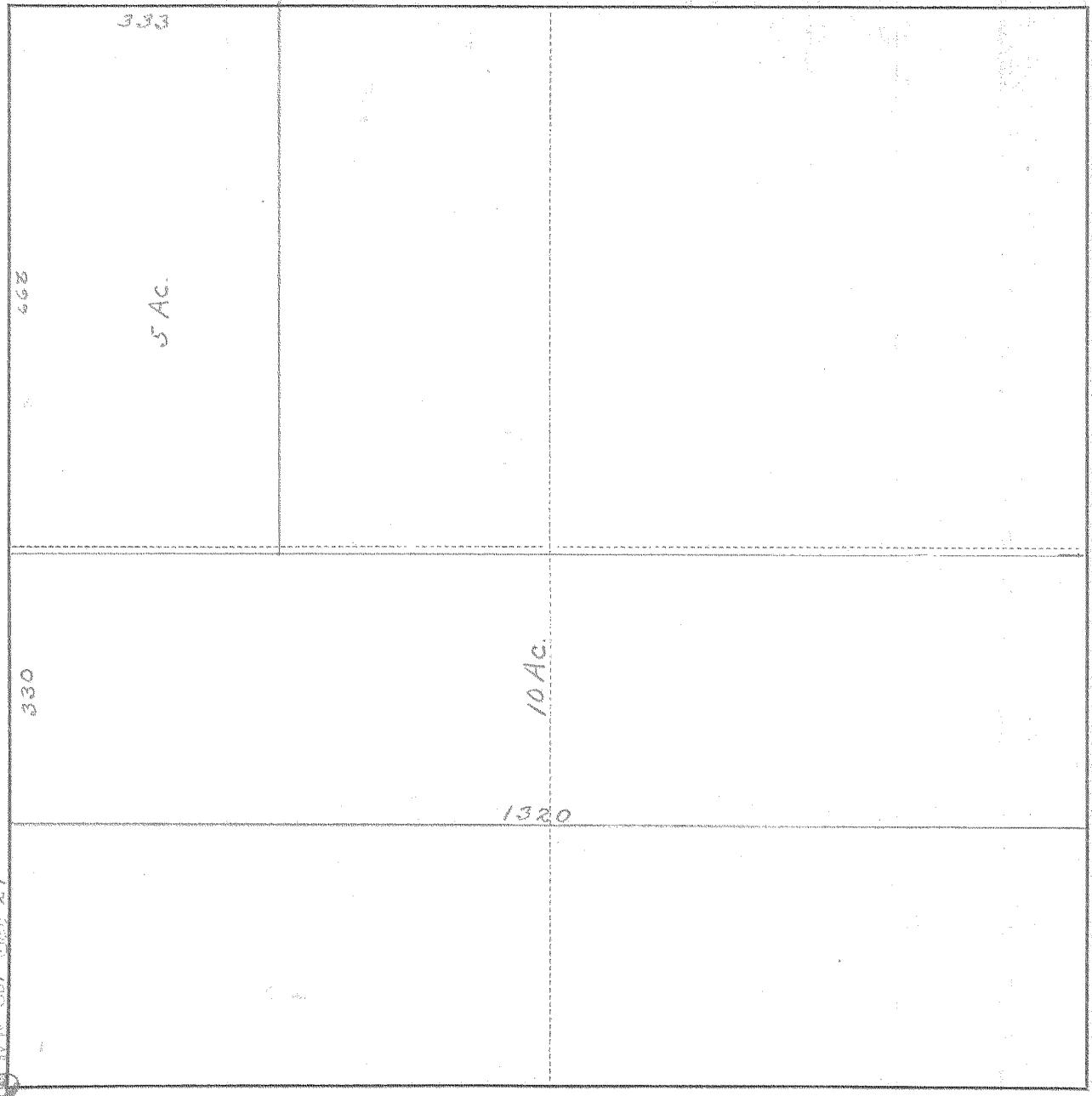


SURVEY IN NW 1/4 NW 1/4, SECT. 24, TWP. 2 N, RANGE 10, EAST W. M.

FOR Dot McTeigh DATE Apr. 17, 1946

NW Cor Sec 24



Scale 1 inch = 200'

I do hereby certify that this sketch was made from notes taken during an actual survey by me on Apr. 17, 1946, and that it correctly represents the field work of said survey.

County Surveyor  
Hood River County, Oregon

0486

9

Helps

#4-287

MILHAM 182357