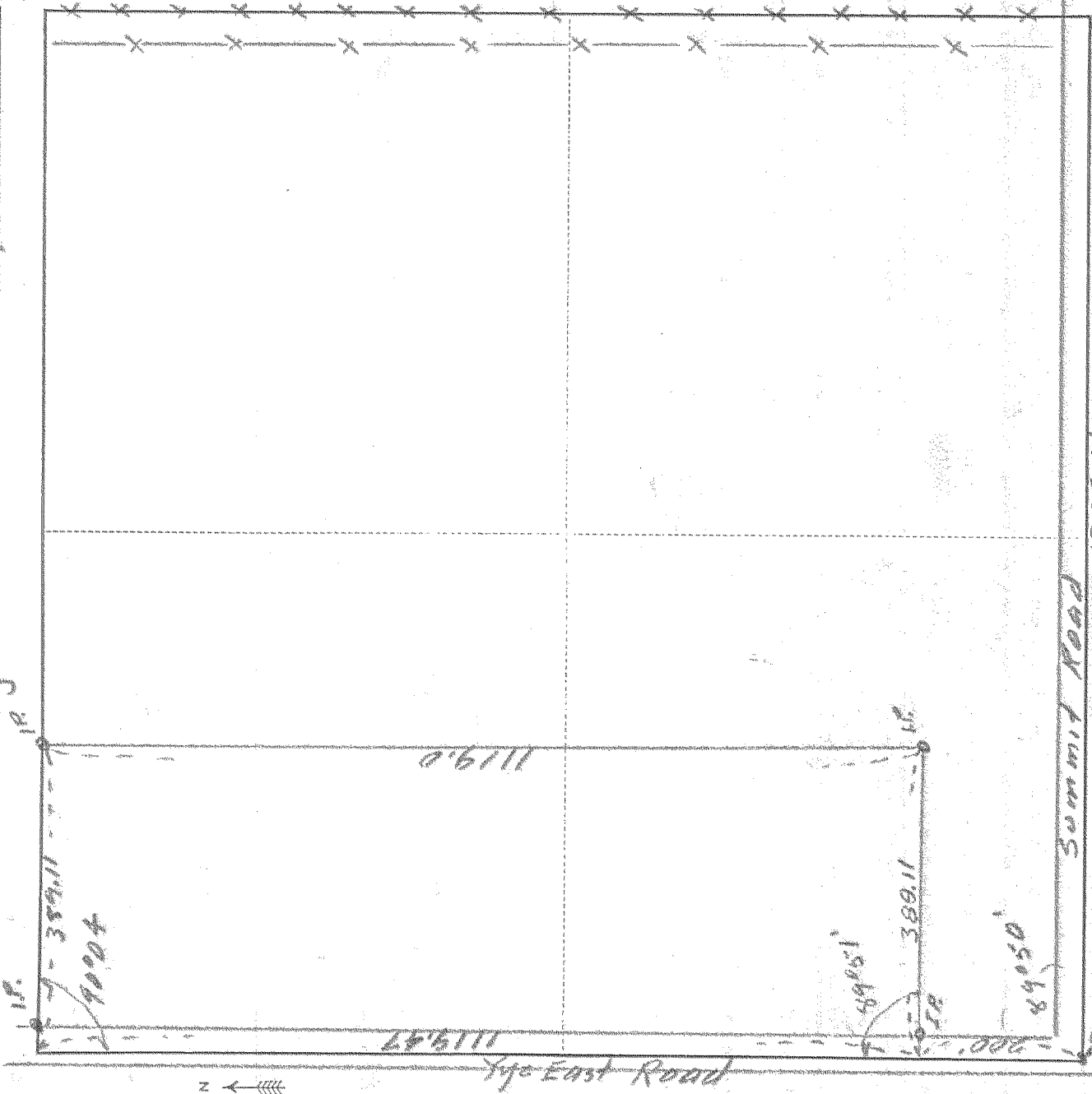


SURVEY IN S.W. 1/4 SE 1/4, SECT. 22, TWP. 2, RANGE 10, EAST W. M.

FOR Geo. Murry DATE March 5, 1957



Scale 1 inch = 200'

50' 1/4 Cor Sec. 22, 2-10

I do hereby certify that this sketch was made from notes taken during an actual survey by me on March 4 19 57, and that it correctly represents the field work of said survey.

M. J. Polheim
County Surveyor
Hood River County, Oregon

Helpers Polheim, Haltalin, Roycraft

8

0476
4-265