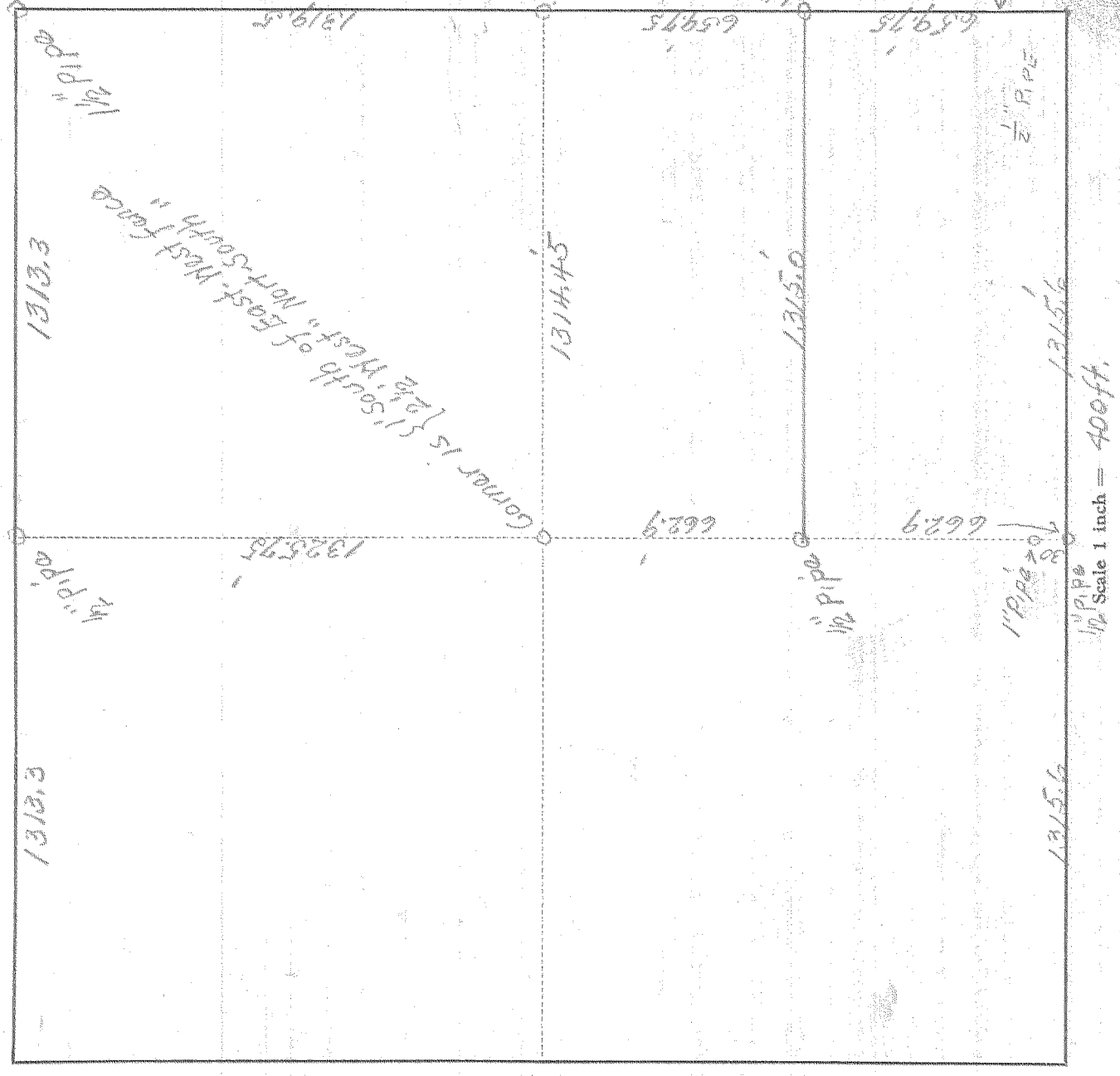


SURVEY IN S.W. 1/4, SECT. 22, TWP. 2 N, RANGE 10, EAST W. M.

FOR County High School DATE Sept. 29, 1950



Scale 1 inch = 400ft.

I do hereby certify that this sketch was made from notes taken during an actual survey by me on Sept. 19 1950, and that it correctly represents the field work of said survey.

Edwin Johnson
County Surveyor
Hood River County, Oregon

Helpers John L. Sheldrake

0470 # 4-268

7

PLUMMER 10007