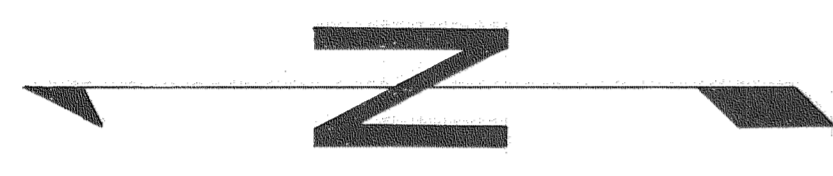
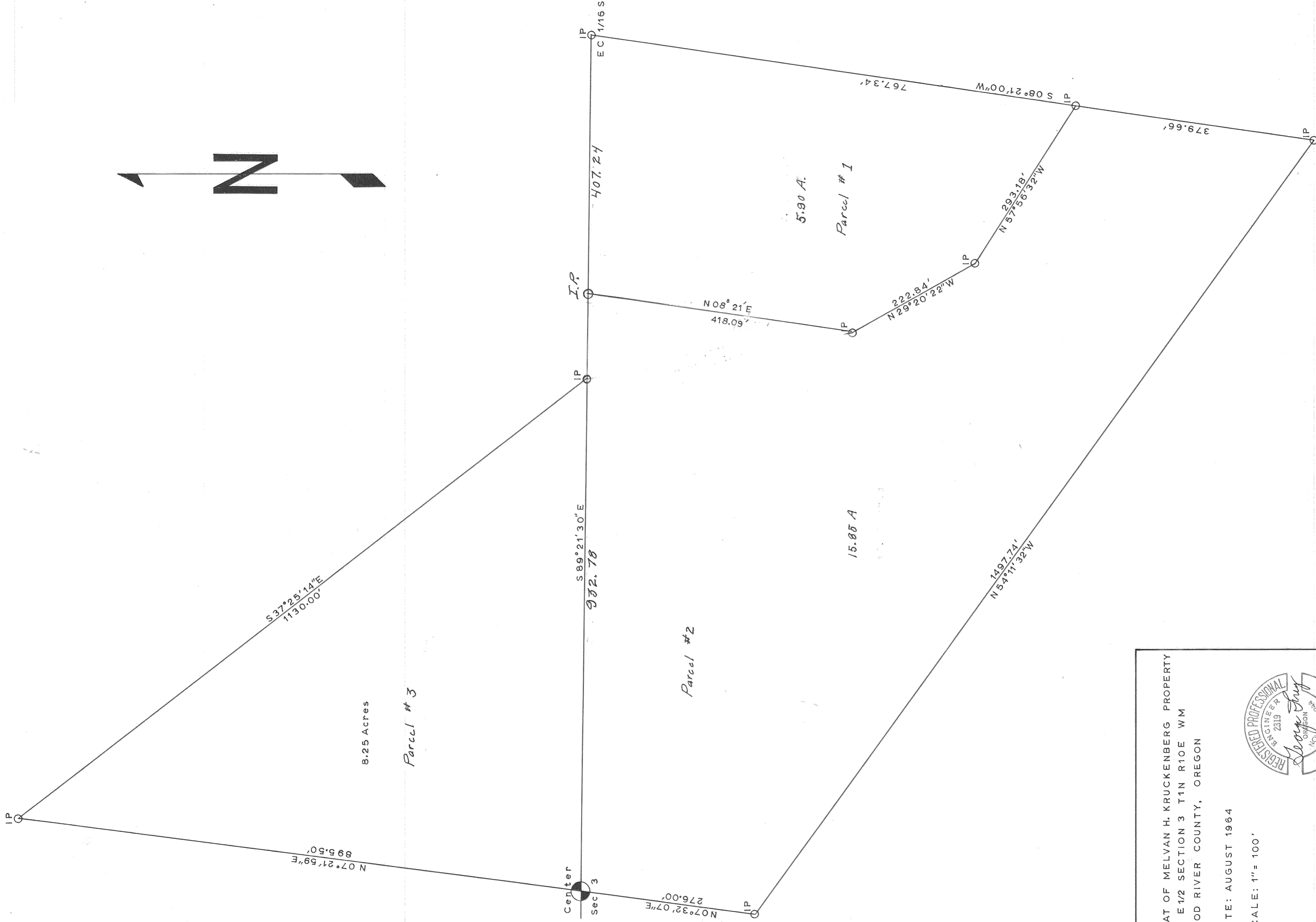


1/10/10-3-C1



PLAT OF MELVAN H. KRUCKENBERG PROPERTY
 IN E 1/2 SECTION 3 T1N R10E WM
 HOOD RIVER COUNTY, OREGON

DATE: AUGUST 1964
 SCALE: 1" = 100'

REGISTERED PROFESSIONAL ENGINEER
 2319
 GEORGE A. BERRY
 NOV 10 1964
 OREGON