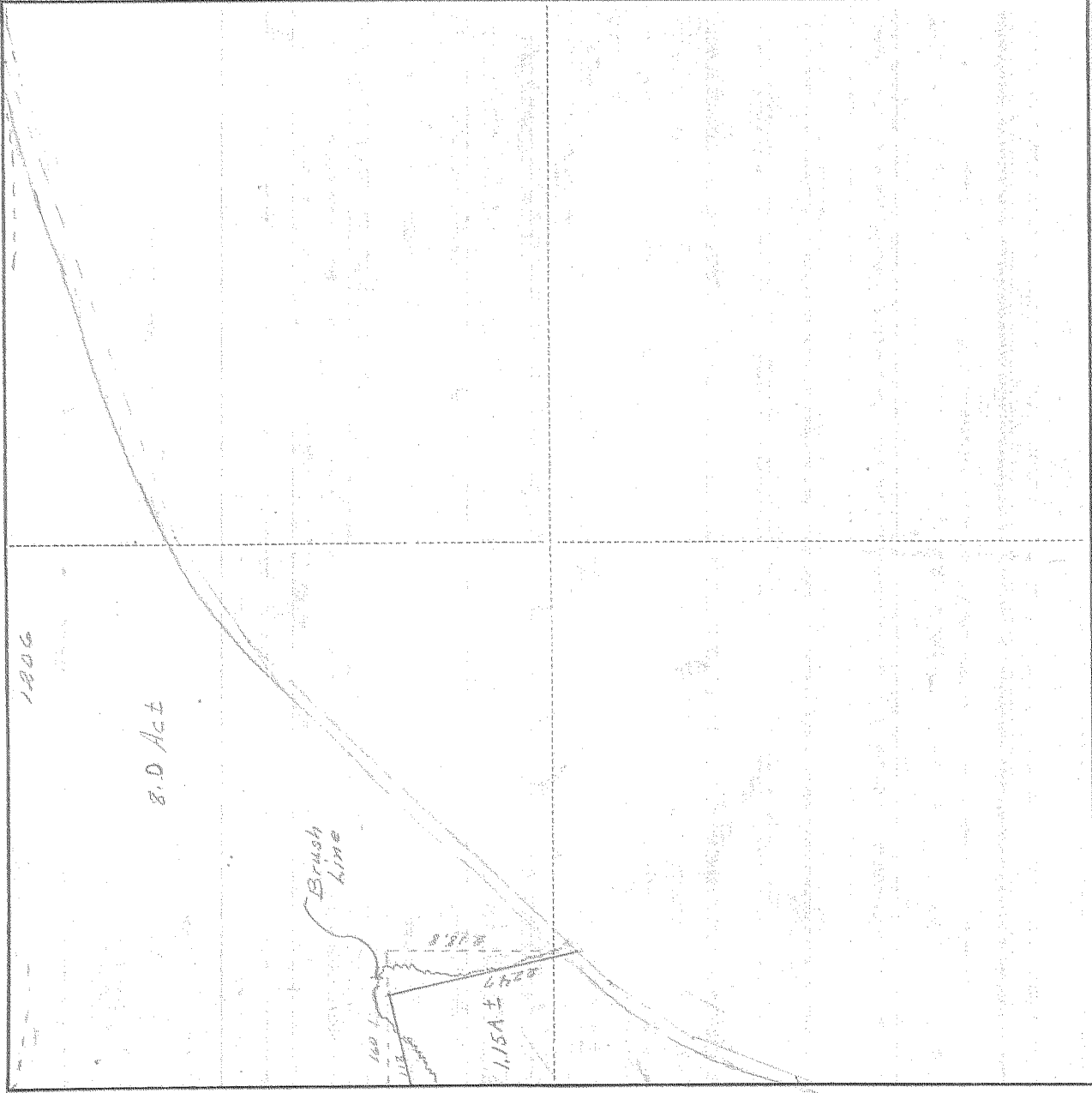


SURVEY IN NW 1/4, SECT. 21, TWP. 21N, RANGE 10, EAST W. M.

FOR D. J. Kline DATE Sept 25 1948



Scale 1 inch = 200 ft.

I do hereby certify that this sketch was made from notes taken during an actual survey by me on _____ 19_____, and that it correctly represents the field work of said survey.

County Surveyor
Hood River County, Oregon

Helpers _____

0160

4-248

KILLIAN 1920P

13