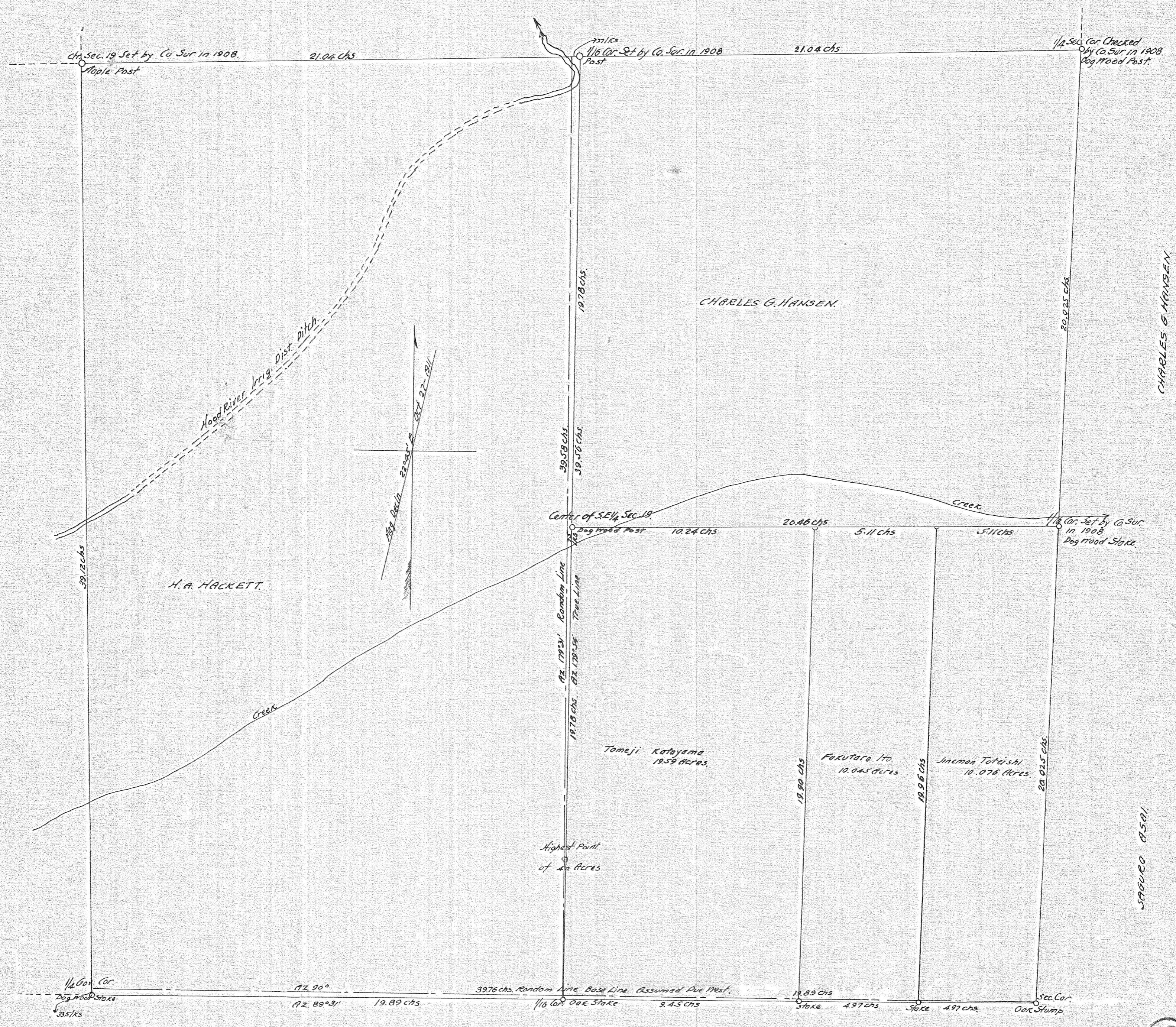


~ PLAT OF SURVEY ~
 OF SE 1/4 OF 3E 1/4 OF SEC 19 T.2 N. R. 10 E. W.M.
 SHOWING LANDS OF TOMEJI KATAYAMA, FUKUTARO ITO & JINEMAN TOTEISHI.
 THE NORTH, EAST & WEST LINES OF THE SE 1/4, WITH THEIR RESPECTIVE
 CORNERS, WERE ESTABLISHED BY THE COUNTY SURVEYOR IN 1908.
 ALL OTHER LINES IN THE SE 1/4, WITH THEIR RESPECTIVE
 CORNERS, AS SHOWN ON WITHIN PLAT, WERE ESTABLISHED
 BY THIS SURVEY MADE BY L.A. HENDERSON, C.E. OCT. 27-1911
 Scale, 3 chs = 1 inch



1

0446

4-229