

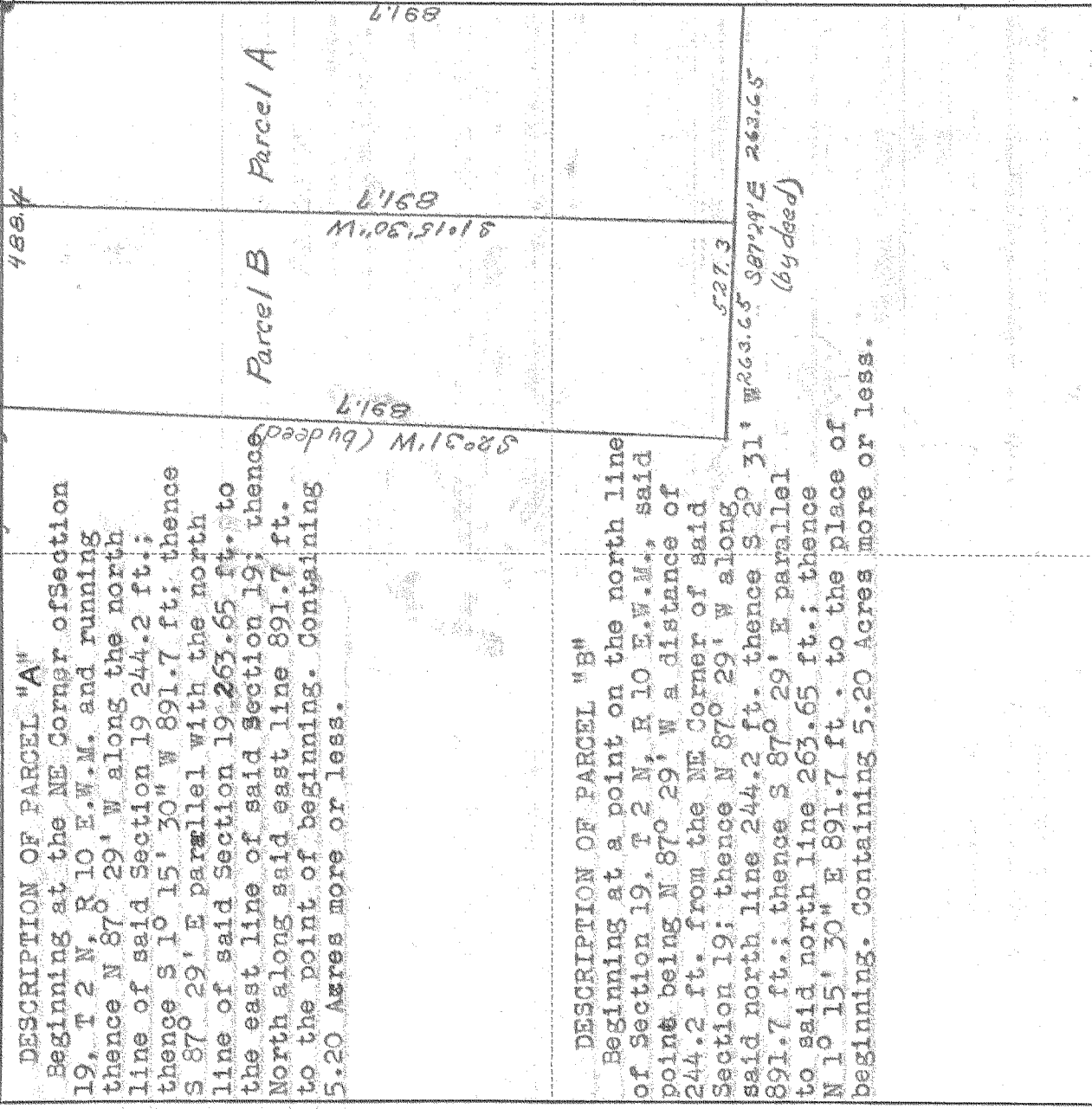
SURVEY IN NE 1/4 of NE 1/4, SECT. 19, TWP. 2 N, RANGE 10, EAST W. M.

FOR N Kobayashi

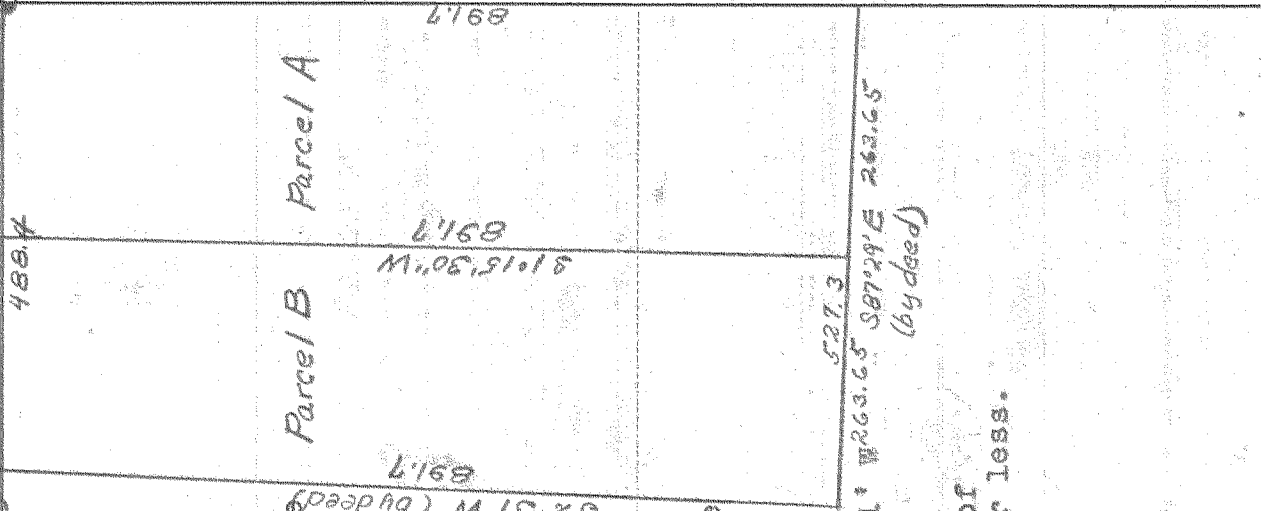
DATE Nov 28

N 87° 29' W 7
(by deed)

244.2



NE Cor
Sec 19
TAN RIDE



DESCRIPTION OF PARCEL "A"
Beginning at the NE Corner of Section 19, T 2 N, R 10 E, W. M. and running thence N 87° 29' W along the north line of said Section 19 244.2 ft.; thence S 87° 29' E parallel with the north line of said Section 19 263.65 ft. to the east line of said Section 19; thence North along said east line 891.7 ft. to the point of beginning. Containing 5.20 Acres more or less.

DESCRIPTION OF PARCEL "B"
Beginning at a point on the north line of Section 19, T 2 N, R 10 E, W. M., said point being N 87° 29' W a distance of 244.2 ft. from the NE Corner of said Section 19; thence N 87° 29' W along said north line 244.2 ft. thence S 2° 31' W 263.65' S 87° 29' E 263.65' (by deed) to said north line 263.65 ft.; thence N 10° 15' 30" E 891.7 ft. to the place of beginning. Containing 5.20 Acres more or less.

Scale 1 inch = 200 ft.

I do hereby certify that this sketch was made from notes taken during an actual survey by me on Nov. 21 1947, and that it correctly represents the field work of said survey.

D. A. Button
Deputy County Surveyor
Hood River County, Oregon

Helpers Dennis Hale

5

PLUMER 10207

#4-234

0445