

1/4 Sec. Cor.

1/4 Sec. Cor.

78  
1817

1349.7'

1322'

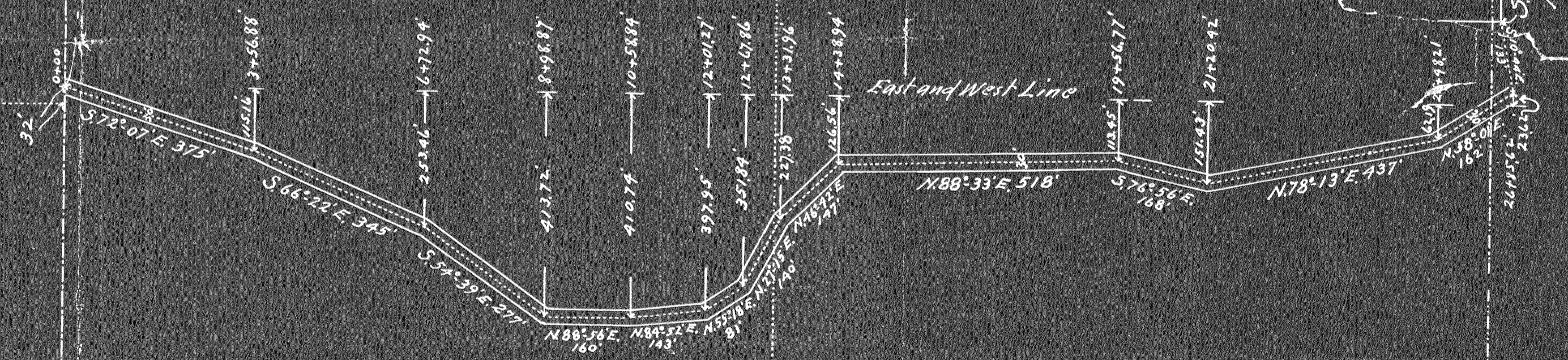
Section Line 1312'  
1645'

N.E. 1/4 OF SEC. 18, T.2 N. R.10 E. W.M. 1349.6'

N.W. 1/4 OF SEC. 17, T.2 N. R.10 E. W.M.

563'

363'



S.E. Cor. of the Holland-Washington Mortgage Company Tract

1/4 Sec. Cor.

18

17

Plat of Road through N.W. 1/4 of Section 17, T.2 N. R.10 W. W.M.  
 Drawn for Humphrey Barton, Attorney, from data furnished by himself.  
 Drawn by T. Milton Fowble,  
 321 Guardian Life Building,  
 St. Paul, Minn.  
 May 16, 1918.

Scale, 200' to 1"

6487

8

