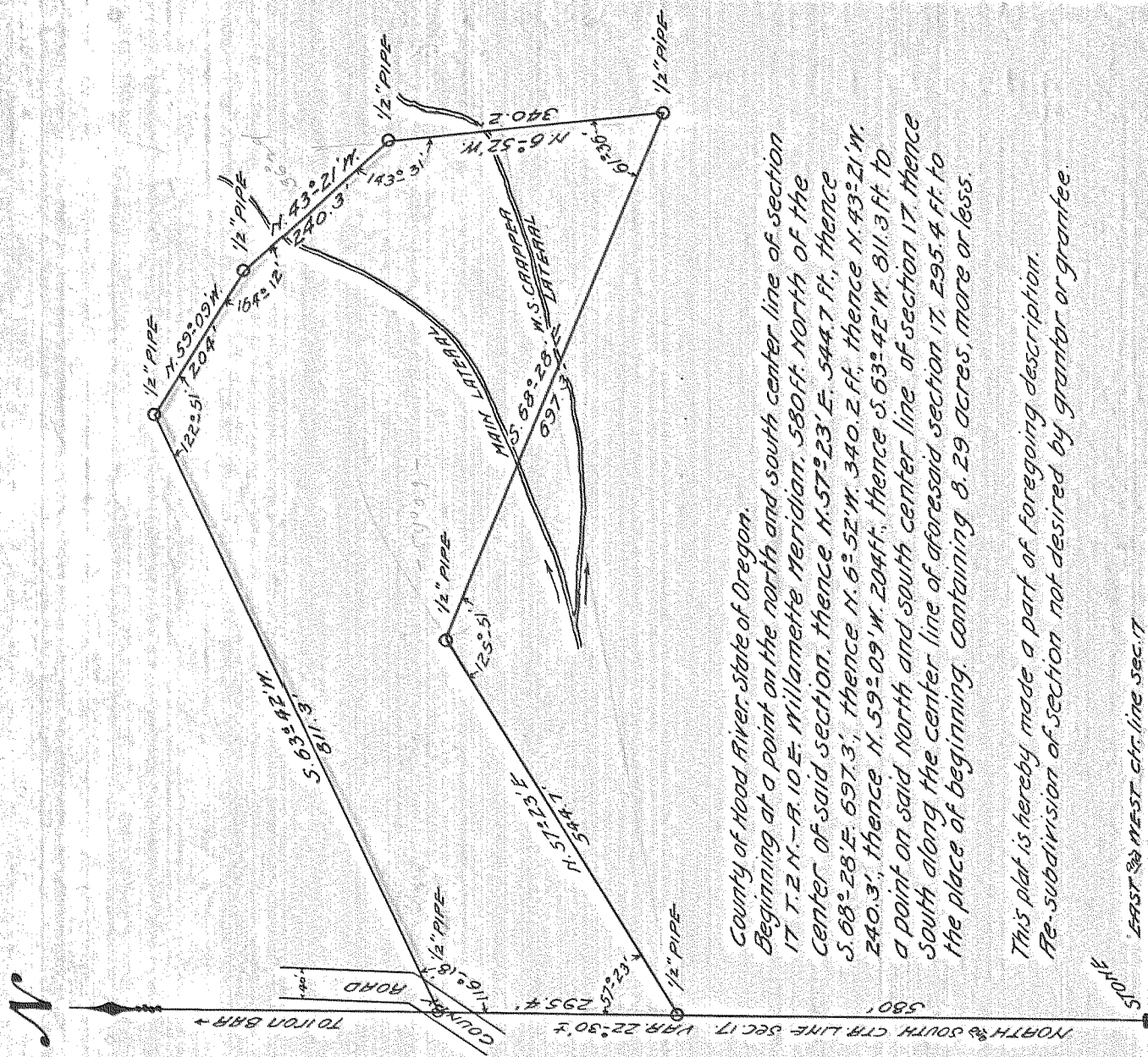


LANDS OF

PHILIP H. CARROLL ^{PLS} & ANNA B. GOODMAN

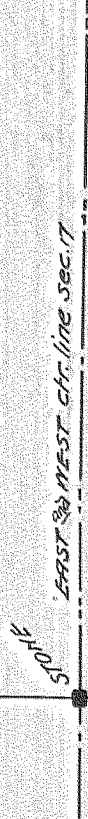
Section 17 Town 2 N. - Range 10 E. W. 1

Scale 1" = 200' Aug. 16, 1910



County of Hood River, State of Oregon.
 Beginning at a point on the north and south center line of section 17 T. 2 N. - R. 10 E. Willamette Meridian, 580ft. north of the center of said section. thence N. 57° 23' E. 544.7 ft., thence S. 68° 28' E. 697.3', thence N. 6° 52' W. 340.2 ft., thence N. 43° 21' W. 240.3', thence N. 59° 09' W. 204ft., thence S. 63° 42' W. 811.3 ft. to a point on said north and south center line of section 17, thence south along the center line of aforesaid section 17, 295.4 ft. to the place of beginning, containing 8.29 acres, more or less.

This plat is hereby made a part of foregoing description.
 Re-subdivision of section not desired by grantor or grantee.



Error in angles - none. Error in latitude and departure less than one ft. each.
 Stone set by Govt. County Surveyor, more than 10 yrs. ago. Iron bar set by Henderson, County Surveyor, to mark center line of section in center line county road.

Murray Kay Civil Eng'r
 Hood River, Or.