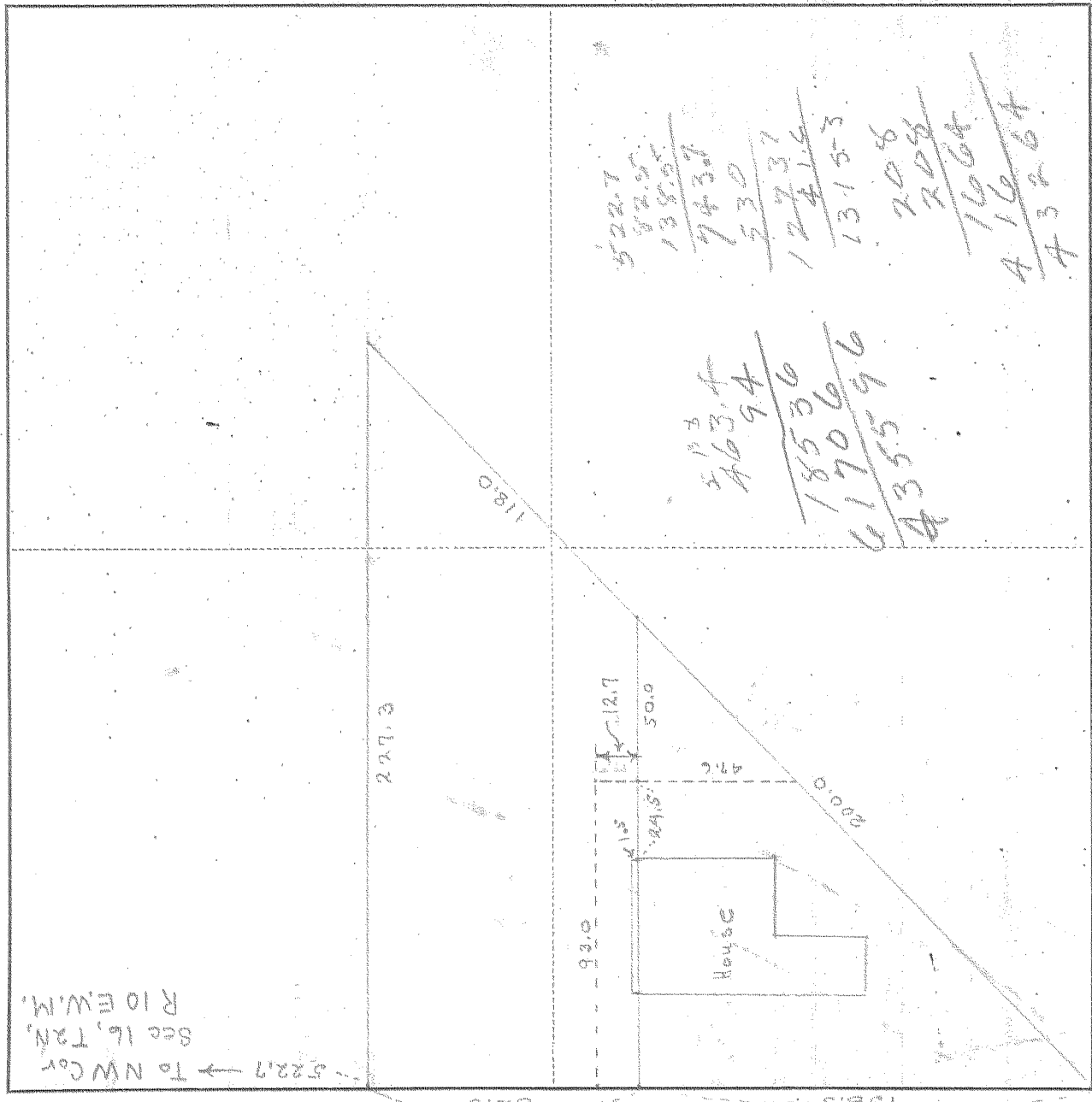


SURVEY IN NW 1/4, SECT 16, TWP 24N, RANGE 10, EAST W.M.

FOR Form DATE Oct 31, 1946



Scale 1 inch = 50 ft.

82.57
12.7
99.8

I do hereby certify that this sketch was made from notes taken during an actual survey by me on 10-31-46 19, and that it correctly represents the field work of said survey.

A.C. Sutton
County Surveyor
Hood River County, Oregon

47.4
32.7
60.2

Helpers _____ 0127 # 4-202

HELIAM 102007