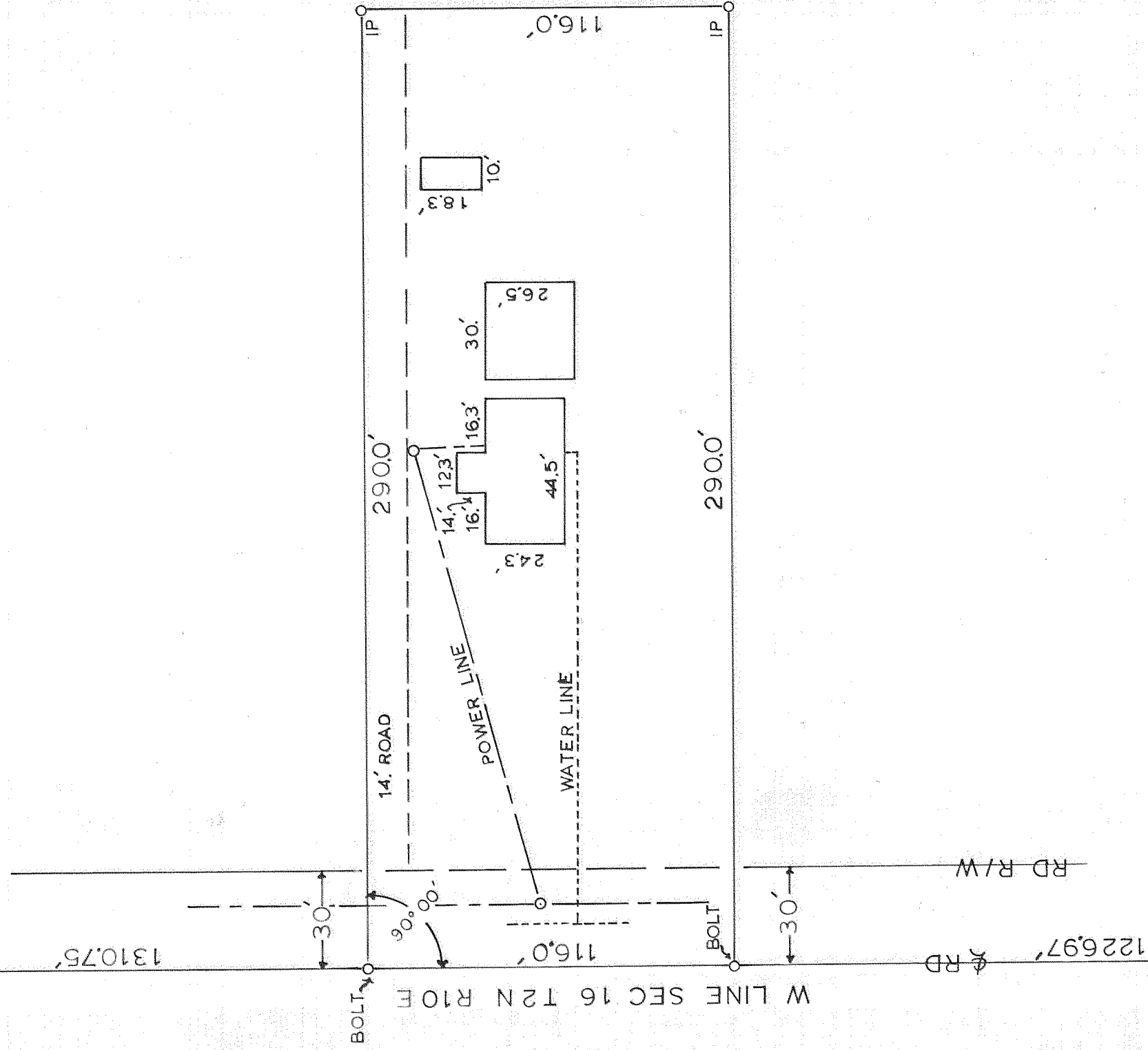
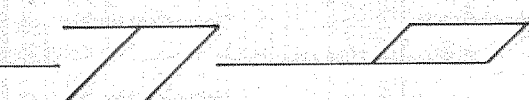


PLAT OF THE RD LYNCH PROPERTY
 NW 1/4 SW 1/4 SEC 16 T2 N R10E WM
 HOOD RIVER COUNTY OREGON
 SURVEY JAN 1965
 SCALE 1 in = 40 ft

W 1/4 S
 SEC 16



17 16 SEC COR
 20 21 T2 N R10E WM

