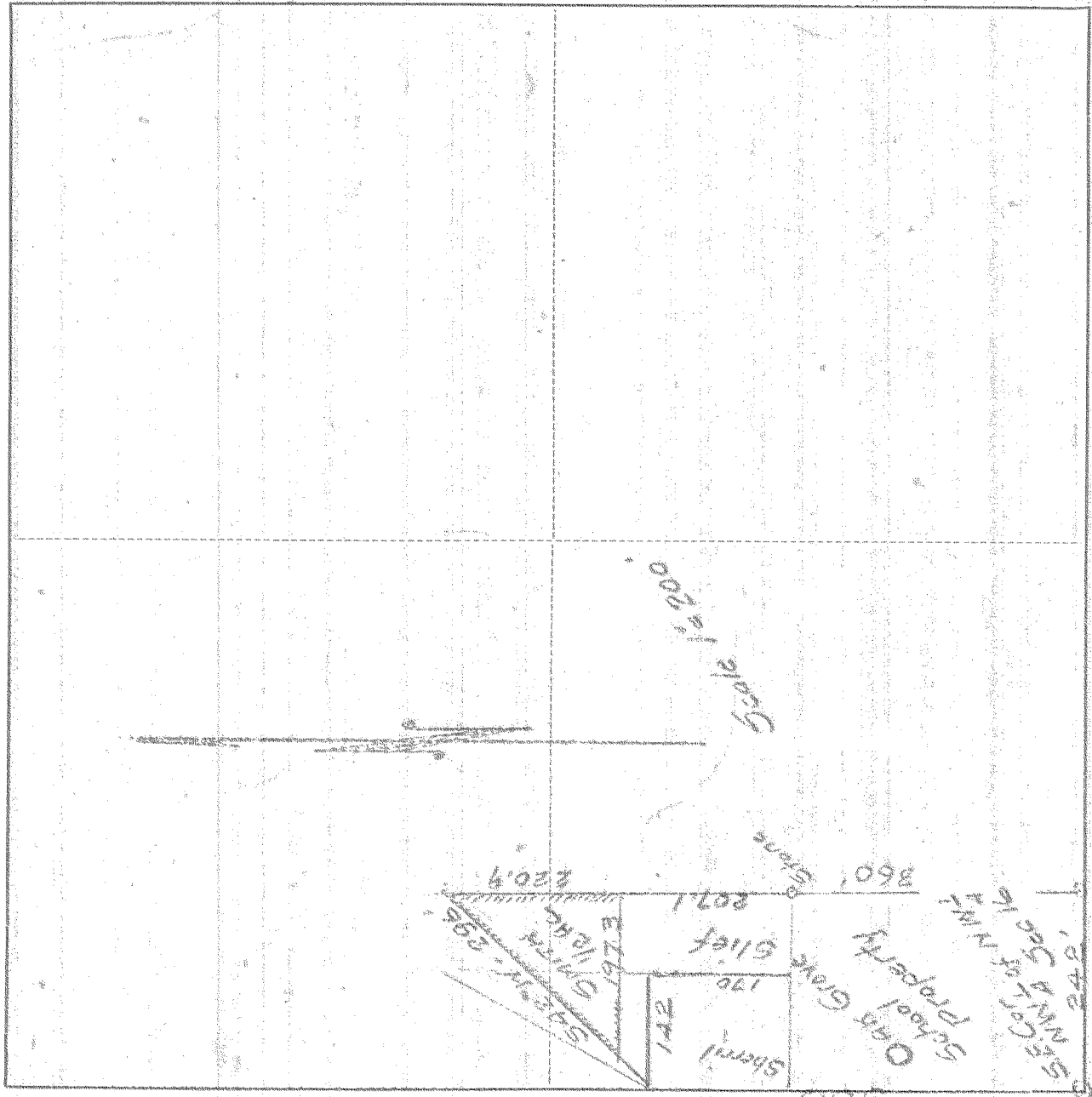


SURVEY IN NW 1/4 of NW 1/4 SEC. 16, TWP. 2, RANGE 10, EAST W. M.

FOR Smith DATE 11/16/31



I do hereby certify that this sketch was made from notes taken during an actual survey made by me on 11/16/31 1923, and that it correctly represents field work of said survey.

C. M. F. Hubbard  
County Surveyor  
Hood River County, Oregon

Helpers Smith

0420 # 4-197