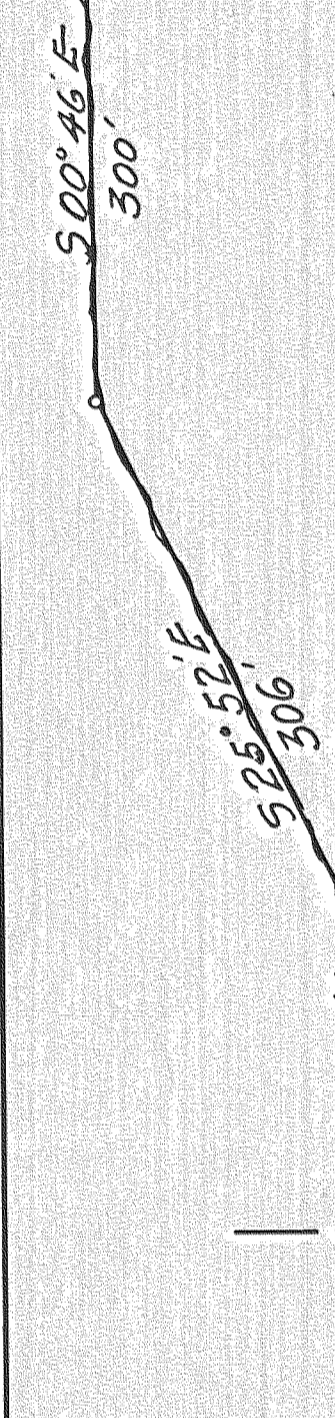


Creek



S 58° 55' W
582'

16' Fir
S 88° 52' W
3192'

S 54° 25' W
432.3'

36' Pine

S 65° 44' W
290.4'

36' Pine
S 63° 04' W
53.5'

42' Fir
N 7° 55' W
622.7'

N 45° 14' W
282.7'

N 32° 19' E
278'

N 3° 56' W
331.4'

E 1/4 Cor. Sec. 14

East Line NE 1/4 Sec. 14 T. 21 N. R. 10 E. W. M.

TRACT OF LAND IN NE 1/4 Sec. 14, T. 21 N., R. 10 E. W. M.
 Scale: 1 in = 100 ft. April 18, 1934
 Surveyed by Edw. Hobson,
 Deputy Co. Engr.

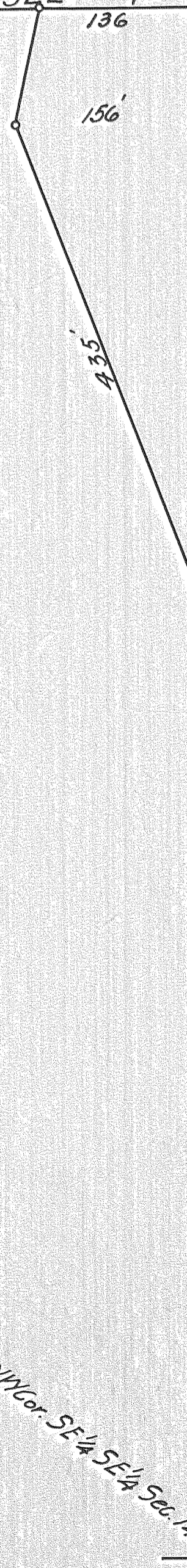
39.89 Acres

East 3227'

East 1118'

218'

S W Cor. SE 1/4 NE 1/4 Sec. 14



Center Line of 20' Road Right of Way

N W Cor. SE 1/4 SE 1/4 Sec. 14

7150 #

14