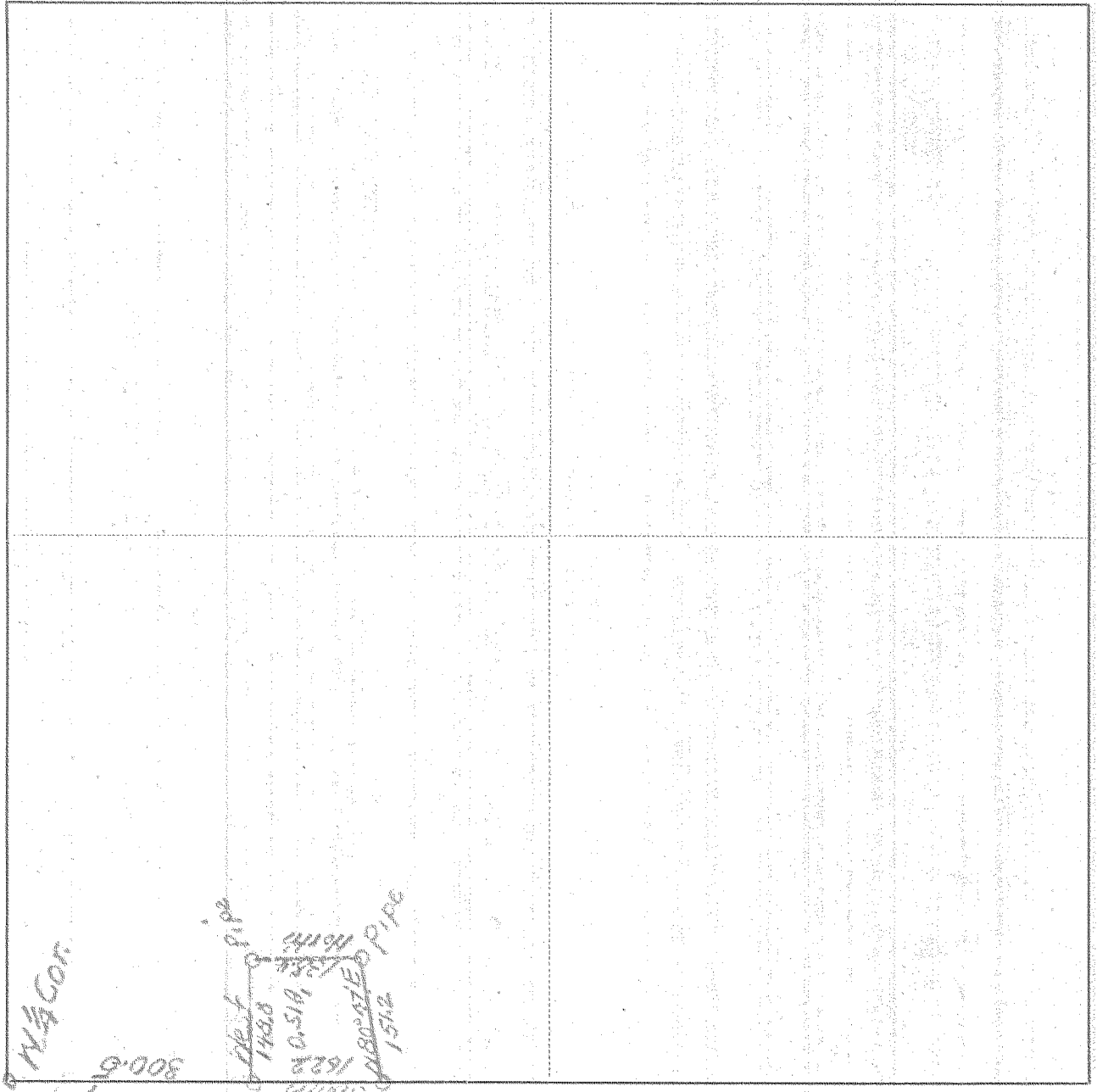


SURVEY IN NW 1/4 SW 1/4, SECT. 14, TWP. 2 N, RANGE 10, EAST W. M.

FOR G. E. McGurdy DATE Apr 19, 1951



Scale 1 inch = 200 ft.

I do hereby certify that this sketch was made from notes taken during an actual survey by me on Apr 19, 1951, and that it correctly represents the field work of said survey.

Edwin Johnson
County Surveyor
Hood River County, Oregon
0414

Helpers G. E. McGurdy

15

#4-143