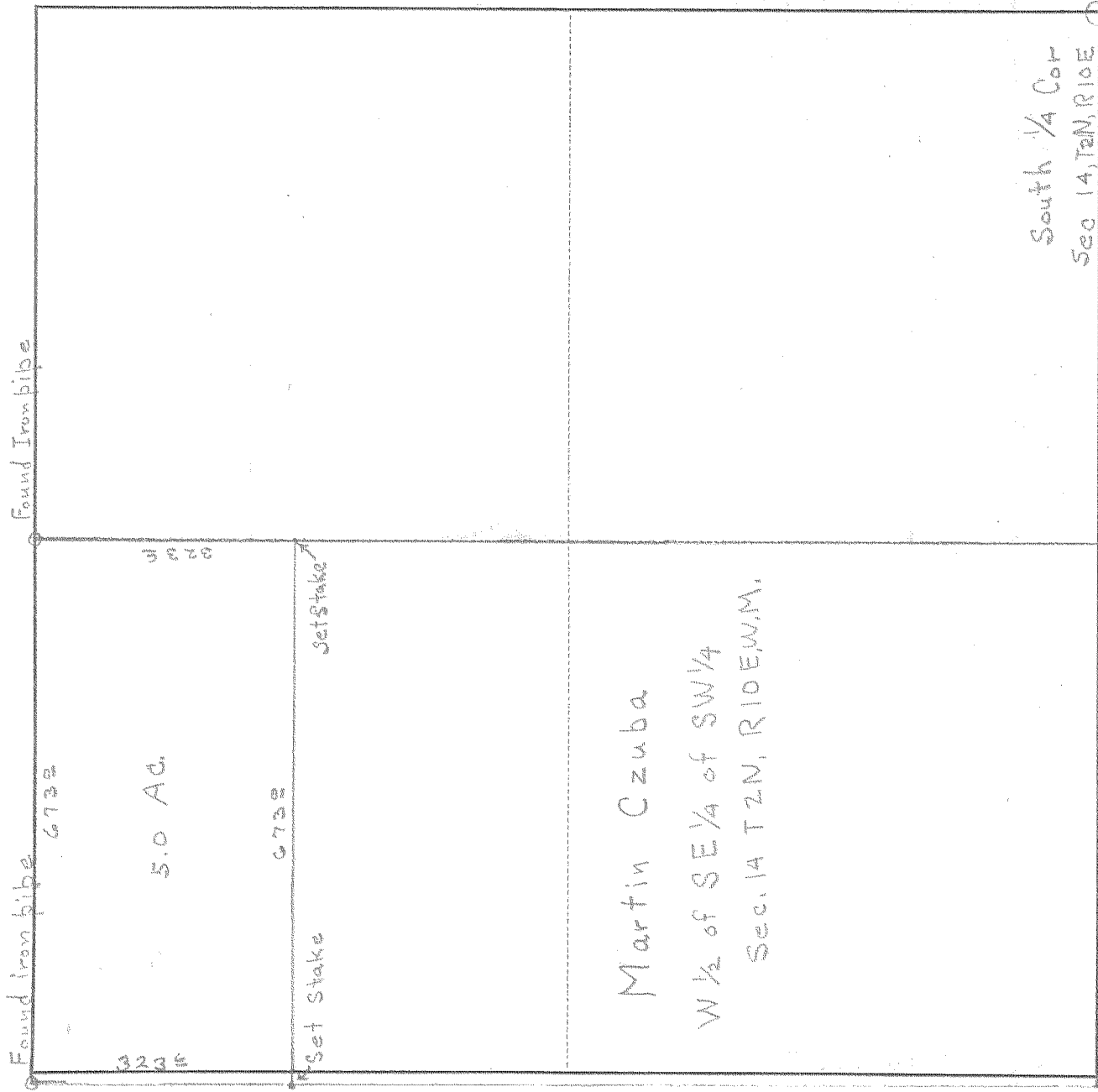


SURVEY IN SE 1/4 of SW 1/4, SECT. 14, TWP. 2 N, RANGE 10, EAST W. M.

FOR Martin Czuba DATE 9-3-46



Scale 1 inch = 200'

I do hereby certify that this sketch was made from notes taken during an actual survey by me on _____ 19_____, and that it correctly represents the field work of said survey.

D. A. Button
County Surveyor
Hood River County, Oregon

13

Helpers Bill Murphy

0412

14-144